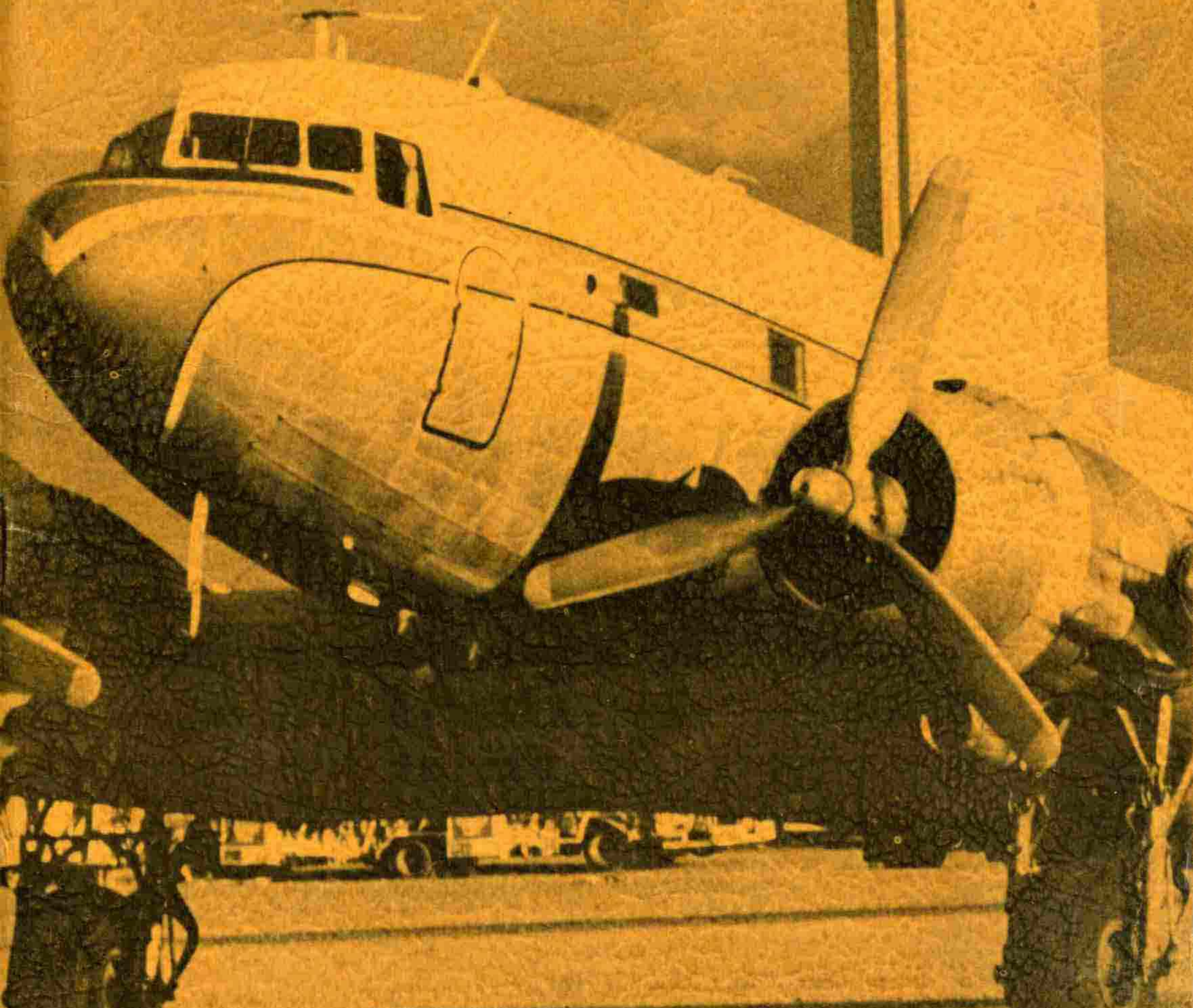


518 533

ALASKAN REGION
TELEPHONE
DIRECTORY

JUNE 1980

*Superseded
June 1981*



**SPECIAL SERVICES
AND
OTHER AGENCIES**

Administrative Equipment Loan Pool5396
Civil Aeronautics Board (CAB)5146
Conference Room Reservations5397
F.A.A. Receptionist5223
Fedaska Federal Credit Union276-1001
G.S.A. Motor Pool4077
National Transportation Safety Board	..5001
Office Machine Repairs5396
Scheduled Airlines Ticket Office	..274-8609
Services - Help5397
Telephone Problems (Switchboard)3629
Vehicle Reservations5397

EMERGENCY NUMBERS

ANCHORAGE EMERGENCY NUMBER	9-911
EMERGENCY MEDICAL SERVICE	5431
FEDERAL PROTECTION SERVICE	5997

ALASKAN REGIONAL

HEADQUARTERS

POSTAL ADDRESS AND LOCATION:

ANCHORAGE FEDERAL OFFICE BUILDING
AND
U. S. COURTHOUSE

701 C STREET, BOX 14

ANCHORAGE, ALASKA 99513

COMMERCIAL TELEPHONE NUMBER:

AREA CODE 907

Dial 271-XXXX

FTS NUMBER: (to call from outside Alaska)

Dial Seattle FTS 8-399-0150 and Ask For

The Alaska 7-digit Number

TELEPHONE INSTRUCTIONS

The Alaskan Regional Office telephone system provides for direct inward dialing (DID) on all incoming commercial calls and direct distance dialing (DDD) on all outgoing calls. FTS calls to Alaska (except from Seattle) must be placed through the Seattle FTS operator (399-0150), during weekdays and business hours (7:30 a.m.-5 p.m., P.T.). Users in Seattle who wish to call Alaska should follow dialing instructions in local agency telephone directories.

TROUBLE REPORTING

Dial 3629 to report trouble encountered using the Anchorage Federal Office Building telephone system or the FTS network. You will be required to give the GSA operator your telephone extension number, location, and problem encountered to assist the telephone repairman in locating the trouble.

DIALING INSTRUCTIONS FOR THE ANCHORAGE FEDERAL SWITCHBOARD.

1. INFORMATION, ASSISTANCE, AND REPAIR
 - Listen for dial tone.
 - Dial 3629.
2. EXTENSION TO EXTENSION
 - Listen for dial tone.
 - Dial 4-digit extension.
3. LOCAL CALLS (ANCHORAGE FREE DIALING AREA)
 - Listen for dial tone.
 - Dial 9 and 7-digit number.
4. ~~FTS CALLS TO FAIRBANKS~~
 - Listen for dial tone.
 - ~~Dial 72.~~
 - Listen for second dial tone.
 - Dial 3-digit extension number for Fairbanks FTS numbers or 9 (listen for third dial tone) + 7-digits for Fairbanks commercial numbers.

If you receive a busy signal after dialing 72, hang up and dial "0" (operator). Give the operator the called number and your 271-xxxx number. She will complete the call.

5. ~~FTS CALLS TO JUNEAU~~
 - Listen for dial tone.
 - ~~Dial 71.~~
 - Listen for second dial tone.
 - Dial 4-digit extension number for Juneau FTS numbers or 9 (listen for third dial tone) + 7-digits for Juneau commercial numbers.

If you receive a busy signal after dialing 71, hang up and dial "0" (operator) for operator completion. Provide the called number and your 271-xxxx number.

6. FTS CALLS TO THE LOWER 48

- Listen for dial tone.
- Dial 8 and 7-digit FTS telephone number.

If all circuits are busy, you will automatically be routed to the Anchorage FTS operator. Provide the called party's 10-digit commercial telephone number and your 271-xxxx number.

7. COMMERCIAL LONG DISTANCE CALLS

- Listen for dial tone.
- Dial 9 + 1 + area code (if required) + 7-digit telephone number.

The call will automatically be charged to the 271-xxxx number appearing on your telephone.

8. COMMERCIAL (OPERATOR ASSISTED) LONG DISTANCE CALLS (COLLECT, PERSON-TO-PERSON, OR CREDIT CARD).

- Listen for dial tone
- Dial 9 + "0" (operator) + area code (if required) + 7-digit telephone number.

You will be intercepted by a commercial long distance operator. Provide the type of call or service wanted and your 271-xxxx number.

9. FIS DIRECTORY ASSISTANCE

- Listen for dial tone.
Dial 8 + 7-digit FIS telephone operator number for the city you wish to call (if unknown, dial your local FIS operator first).
- The distant FIS operator will provide the correct FIS telephone number.
- Request connection to the desired number.

FIS TELEPHONE OPERATORS WILL NOT PROVIDE COMMERCIAL DIRECTORY ASSISTANCE

10. LOCAL (ANCHORAGE) DIRECTORY ASSISTANCE

- Listen for dial tone.
- Dial 9 + 411.

11. ALASKA DIRECTORY ASSISTANCE

- Listen for dial tone
- Dial 9 + 1 + 555-1212

12. LONG DISTANCE (OUTSIDE ALASKA) DIRECTORY ASSISTANCE

- Listen for dial tone
- Dial 9 + 1 + area code + 555-1212

TRANSFER CALLS (Remember--have your number ready)

1. Depress CALL TRANS key and listen for four spurts of tone.
2. Dial desired inside party.
3. Wait until inside party answers.
4. Depress CALL TRANS key to complete transfer.

NOTE: Inside party does not answer or is busy-depress original extension key to return to caller.

CALL TRANSFER TO ATTENDANT

1. Depress CALL TRANS key and listen for four spurts of tone.
2. Dial "0".
3. Give operator instructions.
4. Depress CALL TRANS key to complete transfer.

CONSULTING CALL WITH ANOTHER INSIDE EXTENSION

1. Depress CALL TRANS key and listen for four spurts of tone.
2. Dial desired inside party.
3. Consult with inside party.
4. When information has been obtained, depress original extension key to return to caller.

RING AGAIN (You wish to be alerted when a busy extension becomes free)

1. Depress RING AGAIN key.
2. Hang up.

Station becomes free:

1. Tone buzzer sounds and RING AGAIN lamp winks.
2. Lift handset. Depress the RING AGAIN key.
3. Called extension begins ringing.

CANCEL RING AGAIN

1. Depress RING AGAIN key without depressing an extension.

SPEED CALLING (Refer to your Controller as to your speed calling list)

1. Lift handset.
2. Depress SPEED CALL key, and key code for number desired.
3. A delay will be encountered as the system dials your number.

CALL FORWARD (Forwards incoming calls directed to your phone to another number).

1. Depress CALL FWD key.
2. Dial number to which you wish your calls forwarded.
3. Depress CALL FWD key again. The CALL FWD lamp will light steadily.

CANCEL CALL FORWARD

1. Depress the CALL FWD key. The lamp goes dark.

CONFERENCE (You wish to add a third party to an established call)

1. You ask the first party to wait.
2. Depress the CONF key.
3. Dial any desired number (i.e., if outside line, dial 9 + the number).
4. When third party answers, depress CONF key again. (All three parties connected).

If you have a six party conference, repeat this procedure to add more people, one at a time. (Two outside lines maximum)

NOTE: If at any time you receive a no answer or a busy, depress original extension key to return to conferees.

VOICE CALLING (To call someone over the speaker in their SL-1 Phone)

1. Lift handset and depress VOICE CALL key.
2. If the extension is free, you both hear a 2 second burst of ringing.
3. When ringing stops, you are connected to the speaker of their phone.

NOTE: To answer VOICE CALL, depress associated extension and lift handset.

CALL WAITING (Outside caller waiting for your busy line)

1. Speaker gives two bursts of tone and the CALL WAITING lamp winks.

2. Terminate first call or place on hold as you wish.
3. Depress CALL WAITING key to answer second call.

NOTE: Acts as an extension with all features available.

CALL PICK-UP (To answer an unattended ringing extension in your group)

1. Lift handset and depress CALL PICK-UP key.

ADDITIONAL NOTES:

1. RLS key may be used to disconnect in lieu of replacing handset.
2. VOL UP and VOL DOWN controls the volume of the audible signals.
3. If an outside caller is waiting for your busy line, you will be alerted by a buzz through your speaker. (For sets without feature key.) To receive second call, hang up and second call rings through.
4. Any number may be dialed without lifting handset. Depress and idle extension and dial desired number.

TELEPHONE TIPS

Answering Calls

- Answer promptly on second ring if possible.
- Identify your office and yourself.
- Speak directly and pleasantly into the telephone mouthpiece.
- Do not place the caller on hold any longer than necessary.
- End the conversation with a friendly "goodbye".

Placing Calls

- Plan your conversation. Have all reference material available.
- Have number available before dialing.
- Identify yourself and your office to the answering party.

BE A PROFESSIONAL.....REMEMBER YOUR VOICE IS THE PERSONALITY OF THE AGENCY

FIS TELEPHONE NUMBERS

With the exception of the Regional Headquarters, all numbers listed in this directory are commercial numbers and should be dialed accordingly.

OFFICE OF THE REGIONAL DIRECTOR

AAL-1	DIRECTOR.....	Robert L. Faith.....	5645
AAL-2	DEPUTY DIRECTOR.....	Garland P. Castleberry.....	5645
	Secretary.....	Julia A. Lord.....	5646
AAL-3	EXECUTIVE OFFICER.....	Donald T. Keil, Jr.....	5649
	Secretary.....	Betty C. Martinez.....	5648
AAL-4	PLANNING STAFF.....	Robert J. Baldwin.....	5284
	Secretary.....	Wanda Sloan.....	5282
	Emergency Plans Officer.....	E. I. Williams.....	5286
	Program Analyst.....	Kenneth Peavyhouse.....	5285
	Program Analyst.....	Frank Austin.....	5287
	Program Analyst.....	Helen Pettyjohn.....	5288
AAL-5	PUBLIC AFFAIRS OFFICER.....	Clifford Cernick.....	5296
	PAC Clerical.....	Vacant.....	5293
AAL-6	REGIONAL DUTY OFFICER.....	T. O'Malia.....	5936
	Message Center.....	Alice Kretsinger.....	5939
AAL-7	REGIONAL COUNSEL.....	Donald H. Boberick.....	5269
	Associate Regional Counsel.....	Leland S. Edwards, Jr.....	5269
	Paralegal Specialist.....	Bernard T. Santos.....	5269
	Legal Clerk.....	Jean Mahoney.....	5269
AAL-9	CIVIL RIGHTS STAFF.....	Ann Tucker <i>Francis Austin</i>	5289
	Civil Rights Clerk.....	Patricia Strickland.....	5289
	Specialist.....	Frank Pagano.....	5289
	Women's Program Coord.....	Vacant.....	5289

PERSONNEL MANAGEMENT

AAL-10	CHIEF.....	George B. Woodbury, Jr.....	5471
	Secretary.....	Harriet Flournoy.....	5471
AAL-13	PMIS MANAGER.....	Jim C. Walton.....	5476
AAL-14	EMPLOYMENT BRANCH.....	Paul Richards <i>Chuck Moody</i>	5747
	Employment Assistant.....	Dottie Taylor.....	5759
	Employment Asst (OWCP).....	Carla Riley.....	5747
	Employment Clerk.....	Carolyn Gardner.....	5474
AAL-14.2	EEO Recruiter.....	David Hawk.....	5752
<i>AAL-14D</i>	PL-737/3R/Retirement.....	Teresa Luiten <i>Nellie Boltz</i>	5750
AAL-14A	Airway Facilities.....	Marge Hartman.....	5756
	Employment Assistant.....	Connie Teffeteller.....	5755
AAL-14B	Air Traffic.....	Joyce Moon.....	5754
	Employment Assistant.....	Joyce Daney.....	5753
AAL-14C	Flight Standards/Other.....	Pat Sweeney <i>C.E. Thurston</i>	5758
	Employment Assistant.....	Norma Giles.....	5757
AAL-15	COMPENSATION BRANCH.....	Bill Schmidtman.....	5722
	Classification Asst.....	Jackie Holland.....	5722
	Airway Facilities/Management Systems	Dick Koprowski.....	5726
	Air Traffic/Flight Standards/Logistics/Airports	Erniestine Fleece.....	5725
	Accounting/Budget/Aviation Medical/Civil Aviation		
	Security and Regional Incentive Awards Officer	Vacant.....	5724
AAL-16	LABOR MGMT RELATIONS BRANCH.....	Dean Child.....	5367
	Alcoholism Program Coordinator	Kathy Carr.....	5367
	IMR Assistant.....	Betty Bonner.....	5367

PL-737 - Ruthie Masuhara - 5759

Jim Hughes

AAL-17	TRAINING BRANCH.....	Charles Moody	5372
	Staff & Support/MIS.....	Ray Reeves.....	5378
	Flight Standards/Air Traffic		
		Jim Hughes.....	5379
	Airway Facilities/Airports/Aviation Medical		
		Judy Tamas.....	5375
	Civil Aviation Security/PMIS		
		Jane S. May.....	5372
AAL-17.1	Safety Program Manager.....	Joseph Hunt.....	5376

ACCOUNTING

AAL-20	CHIEF.....	Vacant.....	5231
AAL-20A	Administrative Assistant....	Linda Wohlrabe.....	5228
AAL-22	GENERAL ACCOUNTING BRANCH....	Delores J. Metzger.....	5230
AAL-22A	Accounts Control.....	Hilda Elias.....	5252
AAL-22B	Ledgers and Reports.....	Velma Teutsch.....	5262
AAL-24	ACCOUNTING OPERATIONS BRANCH..	William Farguhar.....	5235
AAL-24A	Payroll Accounts	Elinor Mayo.....	5236
AAL-24B	Voucher Examination.....	Ron Hewey.....	5242

BUDGET

AAL-30	CHIEF.....	Robert N. Lewis.....	5274
	Aviation Medical.....	Cherlyn Bennett.....	5274
	Staff & Support/Centralized Training/Civil Aviation Security/Commissary		
		Don Halloway.....	5278
	Air Traffic.....	Francis S. Cook.....	5279
	Airway Facilities/Logistics.	Joycelyn L. Hardin.....	5277
	Flight Standards/F & E/Airports		
		Neil Reese.....	5276

LOGISTICS

AAL-50	CHIEF.....	Margaret W. Walker.....	5427
	Secretary.....	Amy L. Proue.....	5427
	Administrative Officer.....	Cecelia L. Hunziker <i>Naomi VOLTZ</i>	5430
AAL-52	MATERIEL MANAGEMENT BRANCH....	John Brister <i>TO J. A. W.</i>	5382
AAL-52A	Motor Fleet Mgt.....	Jerrel J. Johnson.....	5390
AAL-52B	Personal Property Mgt.....	John B. Haley..... <i>TO J. A. W.</i>	5384
	Acquisition/Disposal.....	Harold Brown.....	3571
	Property Accountability...	Janet Girt.....	5386
		Elsie Patnoe.....	5386
	Supply Support.....	Marcelle Phillips.....	5385
AAL-52C	Project Materiel Mgt.....	Gale Bauernschmidt <i>TO J. A. W.</i>	5388
		Vacant.....	5387
AAL-52D	Housing Mgt.....	Dave M. Elliston.....	5383
	Housing Occupancy.....	Phyllis Taylor.....	3568
AAL-52E	Logistics Support Complex...	Clyde R. Fall.....	243-1252
	Electronic.....	Ralph Crow.....	243-1992
	Plant.....	J. O. Young.....	243-1971
	Shipping Operations.....	Merle Ranson.....	243-1150

X5 3rd floor NW corner 0

AAL-54	SERVICES BRANCH.....	5397
	Services Desk/Vehicle/Conference Room	
	Reservations.....	5397
	Space Management.....	5397
	Telecommunications.....	5397
AAL-54A	Commissary.....	243-1553
AAL-54B	Graphics.....	5397
AAL-54C	Mail Room.....	5393
	Distribution.....	5394
AAL-54D	Printing Plant.....	5391
AAL-54E	Stock Room.....	5396
AAL-55	PROCUREMENT BRANCH.....	Bill Rensen..... 5401
	Procurement Clerk.....	Myra F. Joy..... 5401
AAL-55A	Service, Includ. Const.....	Mary F. Johnson..... 5866
	Contract Specialist.....	Karla Shaw..... 5859
	Contract Specialist.....	Dave Forsland..... 5862
AAL-55B	Supply & Equip. Purchasing.....	Edd W. Barr..... 5845
	Regional/Station Purchasing.....	Lillian Demoski..... 5847
	Project Material Purchasing.....	Jeanette Marshall..... 5846
	Status & Follow-up.....	Mary Stearns..... 5856
AAL-55C	Transportation Manager.....	Bruce Crouse..... 5863
	Household Good Specialist.....	Carolyn Walker..... 5864
AAL-58	REAL ESTATE & UTILITIES BR.....	Larry D. Snell..... 5868
	Realty Clerk.....	Carla Follett..... 5868
	Management & Disposal.....	James Oliver..... 5875
	Acquisition.....	G. Laurine Williams..... 5877

MANAGEMENT SYSTEMS

Sandy Fredericks 5401
Joyce Zizzo 5861
Dick Brindley (AC/9)

AAL-60	CHIEF.....	Alan Armstrong..... 5171
	Administrative Clerk.....	Audrey Braden..... 5171
AAL-61	WORD PROCESSING BRANCH.....	Vacant..... 5298
AAL-62	MANAGEMENT ANALYSTS.....	Terry Alexander..... 5299
	Donald R. Corey.....	5176
	Dotty Granthum.....	5177
	Nelly Bolzern.....	5173
	Rheta M. Johnson.....	5174
AAL-64	LIBRARY.....	Ivy P. Moore..... 5169
AAL-67	DATA PROCESSING BRANCH.....	Richard W. Brindley..... 5182
	Systems/Programming.....	Robert D. Bruner..... 5186
		Stanford O. Hill..... 5183
		Muriel Girardet..... 5184
		Fred Campbell..... 5185
		Walt Dreyer..... 5180
	Operations.....	Bert Belluomini..... 5188
	Reports Control.....	5189

FLIGHT STANDARDS

AAL-200	CHIEF.....	Robert G. Judd.....	5514
AAL-205	Program Analyst Staff.....	Paul Fischer.....	5910
AAL-210	ENGINEERING & MANUFACTURING FIELD OFFICE		
		Dayton O. Curtis.....	5927
AAL-220	AIRCRAFT MANAGEMENT BRANCH.....	Jerome P. Bushnell.....	5403
AAL-222	Airspace & Procedures.....	Donald Christensen.....	5403
AAL-223	Flight Inspection.....		5403

AAL-250	GENERAL AVIATION/AIR CARRIER BRANCH	
	William C. Reynolds.....	5906
AAL-251	General Aviation Operations.	Arthur Wells..... 5906
AAL-252	General Aviation/Air Carrier Maintenance	
	Dale L. Hanson.....	5906
AAL-253	Accident Prevention.....	Eugene Morris..... 5906
AAL-254	Air Carrier Operations.....	Paul S. Donohoe..... 5906

A V I A T I O N M E D I C A L

AAL-300	CHIEF.....	John E. Hepler, M.D.....	5431
	Secretary.....	Linda Peterson.....	5431
	Medical Officer.....	James P. Rigg, Jr., M.D.....	5431
	Nurse.....	Patricia A. Sanders, R.N....	5431
	Nurse.....	Mary Grindrod, R.N.....	5431
	Medical Admin Asst.....	Peggy Don.....	5431

A I R W A Y F A C I L I T I E S

AAL-400	CHIEF.....	A. B. Bruck.....	5616
AAL-401	Assistant Chief.....	Roy N. Pickett.....	5616
AAL-400a	Division Secretary.....	Lois H. Shute.....	5616
AAL-420	PROGRAM SUPPORT BRANCH.....	Robert E. Wilson ..	5829
AAL-421	Fiscal Support Section.....	Peggy Smith.....	5363
	F&E Fiscal Analyst.....	Fay Lauver.....	5358
	F&E Fiscal Analyst.....	Naomi Voltz.....	5365
	OPNS Fiscal Analyst.....	Lance Harvey.....	5359
	OPNS Fiscal Analyst.....	Chris Novosad.....	5360
	Fiscal Technician.....	Vacant.....	5841
AAL-422	Staff Training Support Sec....	Al George.....	5829
	AF Training Facility.....	MRI FLD 277-	0589
	Program Assistant.....	Jane Soper.....	5833
	Word Processing Equipment Operator	Linda Farrell.....	5620
AAL-430	ENGINEERING BRANCH.....	Dennis J. Warth.....	5351
AAL-430.1	Technical Assistant.....	G. P. DePalmer.....	5354
AAL-430B	Frequency Management.....	William A. Dolan.....	5343
AAL-430C	Leased Communications.....	William H. McKee.....	5344
AAL-430D	Drafting.....	Vacant.....	5350
AAL-430D	Reference Room.....		5348
AAL-431	Electronic Engineering.....	Robert J. Morrison.....	5321
	Radar Lead Engineer.....	Robin Masek.....	5327
	Automation Lead Engineer.....		5323
	VORTAC Lead Engineer.....	Bruce Benson.....	5314
	ILS Lead Engineer.....	Wilse Morgan.....	5325
	Comm Lead Engineer.....	Robert Welcyng.....	5316
AAL-432	Environmental Engineering....	Vard D. Jensen.....	5317
	Civil Engineer.....	Richard Turnbull.....	5332
	Electrical Lead Engineer....	Leon Getz.....	5310
	Mechanical Lead Engineer....	William Arnold.....	5305
	Real Estate.....	Harry Gilmore.....	5334
AAL-450	PLANNING/ESTABLISHMENT BR....	Patrick B. Kittrick.....	5192
	Secretary.....	Vacant.....	5192
AAL-450A	Program Managers.....	Leo E. Obermiller.....	5196
AAL-450B		Allan B. Hansen.....	5198

AAL-450C		Calvin Hoggard.....	5199
AAL-450D		Charles Horacek.....	5197
AAL-450M	Equipment Specialist.....	Delbert Thomas.....	5204
	Administrative Clerk.....	Sandra Wallace.....	5201
AAL-451	Environmental Section.....	Neil H. Martens.....	5201
	Contract Coordinator.....	Daryl Reindl.....	5207
	Force Account Coordinator...	Harold Wright.....	5208
AAL-452	Electronics Section.....	John W. Smith.....	5201
	SET.....	John D. Twiggs.....	5214
	SET.....	Kenneth Odsather.....	5213
AAL-452A	Electronics Shop.....	Dennis Weyand.....	243-2633
AAL-453	Program Planning Section.....	Frank Berry.....	5217
	Secretary.....	Vacant.....	5217
	Electronic Engineer.....	Paul Rogers.....	5221
	Electronic Engineer.....	Leonard Grau.....	5222
	Electrical Engineer.....	Wayne Boedecker.....	5225
	Civil Engineer.....	Vacant.....	5224
AAL-460	MAINTENANCE OPERATIONS BR.....	John W. Ranspot.....	5840
AAL-461	Technical Operations.....	Louis L. Olsen.....	5783
	Comm/Test Equip.....	P. J. Williams.....	5835
	Data Outage.....	Wes Pollock.....	5839
	Environmental/EPA.....	Perley Jones.....	5837
	Environmental/Safety.....	Dave Zeller.....	5836
	Modifications/JAI.....	Herb Heck.....	5834
	Engineering Tech.....	JoAnn Gruber.....	5838
AAL-461B	Technical Inspectors.....	Donald Chambers.....	5800
		Ronald Forsyth.....	5788
		Ronald Hoffman.....	5782
		Edward Hull.....	5790
		Henry Luecke.....	5779
		Gus McKenzie.....	5789
		William Miller.....	5787
AAL-463	Maintenance Projects Section..	Henry Nakamura.....	5792
AAL-463A	Planning Support.....	J. R. Eskridge.....	5805
	Planning Officer (Plant)...	Vern Brooks.....	5799
	Planning Officer (Plant)...	Mel Leskinen.....	5806
	Fiscal.....	Art Chase.....	5804
	Logistics.....	Cliff Roberson.....	5801
AAL-463P	Plant Unit.....	Bruce McCurtain.....	5807
	Engineering Tech.....	Donald Smith.....	5798
	Engineering Tech.....	David West.....	5797
AAL-463P1	Maintenance Shops.....	Frank Roachell.....	243-3900
AAL-463E	Electronic Unit.....	Richard Specht.....	5802
AAL-463E1	Electronic Shop.....		243-2642

occup
safety
PARM

PRIM

BACKUP



5782
5782

AIR TRAFFIC

AAL-500	CHIEF.....	Robert F. Harik.....	5464
AAL-501	Assistant Chief.....	David C. Simpson.....	5464
AAL-500A	Secretary.....	<i>Celta</i> Pamela Burger.....	5464
AAL-510	PLANS/PROGRAMS & EVAL.....	Henry A. Elias.....	5878
AAL-510A	Secretary.....	Ronnie Davis.....	5878
AAL-511	Programming/Training.....	Marion Figley.....	5887
AAL-512	Administrative Assistant...	Hilde Newton.....	5885
AAL-512.1	Administrative Clerk.....	Wanda Daniels.....	5886
AAL-513	Evaluation Specialist.....	Marvin Mahrt.....	5890

AAL-514	Evaluation Specialist.....	Bobby Lamkin.....	5889
AAL-515	Evaluation Specialist.....	John Hummel <i>J. Bassler</i>	5888
AAL-516	Planning Specialist.....	Robert A. Riedel.....	5883
AAL-517	Planning Specialist.....	Dalton Sessions.....	5884
AAL-518	Planning Specialist.....	Freeman Lathan.....	5882
AAL-519	Systems Planner.....	Robert Stinson.....	5881
AAL-530	OPNS/PROCEDURES & AIRSPACE....	Henry F. Dodd.....	5892
AAL-530A	Secretary.....	Marian Shavings.....	3624
AAL-530B	Administrative Clerk.....	Irene Maris.....	3625
AAL-531	Opns Spec (Center).....	Lee Peterson	5898
AAL-532	Opns Spec (Twr's/RAPCON).....	J. H. Groeneveld.....	5897
AAL-533	Opns Spec (IFSS/FSS).....	John Bassler.....	5896
AAL-534	Opns Spec (FSS).....	Charles Muhs.....	5895
AAL-535	Procedures/Airspace Spec....	Vacant.....	5901
AAL-536	Procedures/Airspace Spec....	John Costello.....	5902
AAL-537	Procedures/Airspace Spec....	Jerry Wylie.....	5903
ATREP	Air Traffic Representative..	Walter Claxton <i>Richard Daum</i>	5899
RADIO	Principal RADIO.....	John Hatcher.....	EDF 752-4418
RADIO	RADIO.....	Richard Daum.....	EDF 752-4418
AFREP	Air Force Representative....	Major. Ron Brooks.....	EDF 752-5346
AAL-550	AUTOMATION STAFF.....	Byron Melius.....	5468

AIRPORTS

AAL-600	CHIEF.....	Robie B. Strickland.....	5438
	Secretary.....	Ethel Hoffman.....	5438
AAL-610	PLANNING & PROGRAMS BRANCH....	Paul A. Larson.....	5440
	Administrative Clerk.....	Helen Baggett.....	5440
	Civil Engineer.....	James Perham.....	5448
	Civil Engineer.....	Stephen Kurth.....	5449
	Civil Engineer.....	Ellis McElroy.....	5446
	Prog. Spec. (Environmental).....	Lawrance T. Schultz.....	5443
	Program Specialist.....	Howard Smith.....	5444
	Program Specialist.....	Alice M. Crewdson.....	5445
<i>Safety + STDS</i> AAL-620	ENGINEERING BRANCH	Kenneth R. Moore.....	5451
	Civil Engineer (Paving).....	Richard Griffith.....	5454
	Civil Engineer (Vis. Aids).....	Samuel J. Parsons.....	5456
	Civil Engineer (General).....	Russell L. Oyster.....	5455
	Engineering Program Asst....	Maxine Bean.....	5451
AAL-690	AIRPORT CERTIF. & SAFETY.....	Floyd Pattison.....	5457
	Administrative Clerk.....	Carolyn M. DiPaul.....	5457
	Cert. & Safety Spec.....	Ahmad Amer.....	5461
	Cert. & Safety Spec.....	Robert Cushman.....	5460
	Civil Engr. Tech.....	Ann Turner.....	5462

CIVIL AVIATION SECURITY

AAL-700	CHIEF.....	Robert W. Oliver.....	5557
	Secretary.....	Barbara Thurman.....	5557
AAL-710	INVESTIGATION & INTERNAL SECURITY BRANCH.....	Vacant <i>Rex Morris</i>	5567
	Personnel Security.....	Charlene Taylor.....	5565
	Physical Security.....	Dorothy A. Agen.....	5566
AAL-720	AIR SECURITY BRANCH.....	Floyd J. Seeley.....	3608
	Air Carrier Security.....	Robert D. Olson.....	5562
	Airport Security.....	Warner J. Rhodes.....	5561

AAL-720A CIVIL AVIATION SECURITY
 FIELD OFFICE (ANC/CASFO).....Int'l 243-4338
 AAL-720B HAZARDOUS MATERIALS
 Coordinator.....Rex Morris..... 248-2408

AREA COORDINATOR'S

Anchorage.....Frank Babiak.....243-2348
 Fairbanks.....Paul Gallagher.....456-4600
 Juneau.....Harold Guthrie.....789-2193
 King Salmon.....Carl Fundeen.....246-3312

LOCAL COORDINATOR'S

Barrow.....Robert Mitchell.....852-4566
 Bethel.....David Brown.....543-2230
 Bettles.....Ann Carswell.....692-5222
 Cold Bay.....Larry Buss.....532-2443
 Cordova.....Harold Richardson.....424-3254
 Deadhorse.....Frank Kirnig.....852-4566
 Fairbanks.....Paul Gallagher.....456-4600
 Gulkana.....Dick Mathews.....822-3236
 Homer.....John Ruth.....235-8588
 Juneau.....Harold Guthrie.....789-2193
 Kenai.....Elmer Knight.....283-7215
 Ketchikan.....Buddy Bayeur.....225-5923
 Kodiak.....Ernest Bates.....487-4339
 Kotzebue.....Martin Pederson.....442-3755
 McGrath.....Richard Forsgren.....524-3611
 Nome.....Robert Salzman.....443-2291
 Northway.....Alvin Nowland.....778-6611
 Sitka.....Homer Sutter.....966-2221
 Valdez.....Gary Near.....835-4602
 Yakutat.....Jim Jensen.....784-3314

LOCATION IDENTIFIERS

ADQ - KODIAK	LVD - LEVEL ISLAND
AKN - KING SALMON	MCG - MCGRATH
ANC - ANCHORAGE	MPY - MURPHY DOME
BET - BETHEL	MRI - MERRILL FIELD (ANC)
BIG - BIG DELTA	OME - NOME
BKA - BIORKA ISLAND	ORT - NORTHWAY
BRW - BARROW	OTZ - KOTZEBUE
BT' - BETTLES	PAQ - PALMER
CDB - COLD BAY	PSG - PETERSBURG
CDV - CORDOVA	SCC - DEADHORSE
DLG - DILLINGHAM	SIT - SITKA
ENA - KENAI	SSR - SISTERS ISLAND
FAI - FAIRBANKS	TAL - TANANA
FWL - FAREWELL	TKA - TALKEETNA
GAL - GALENA	UNK - UNALAKLEET
GKN - GULKANA	VDZ - VALDEZ
HOM - HOMER	WRG - WRANGELL
ILI - ILIAMNA	YAK - YAKUTAT
JNU - JUNEAU	ZAN - ANCHORAGE
KTN - KETCHIKAN	

FIELD FACILITIES

AIR TRAFFIC

5561

ZAN ARTOC.....Alexander Kulikowski.....333-~~6565~~
 5400 Davis Highway - Anchorage, AK 99506

ANC FSS/IFSS.....Jerry W. Ball.....263-6528
 2016 East Fifth Avenue - Anchorage, AK 99501

ANC TRACON.....Carl Joritz.....243-4575
 5200 West International Airport Road - Anchorage, AK 99502

BRW FSS.....(See FAI FSS).....852-2511
 P.O. Box 510 - Barrow, AK 99723

BEI' FSS.....David Brown.....543-2230
 P.O. Box 326 - Bethel, AK 99559

BIT' FSS.....Ann M. Carswell.....692-5533
 Bettles, AK 99726

BIG FSS.....Rick Ericson.....872-3101
 Mile 261, Richardson Highway - APO 98733 Intra-Alaska Mail

CDB FSS.....Larry Buss.....532-2454
 Box 38 - Cold Bay, AK 99571

CDV FSS.....Harold B. Richardson.....424-7644
 P.O. Box 80 - Cordova, AK 99574

SCC FSS.....(See FAI FSS).....659-2401
 Pouch C - Fairbanks, AK 99701

DLG FSS.....Frank Howard.....842-5626
 P.O. Box 207 - Dillingham, AK 99576

FAI FSS.....Richard Tomany.....452-5388
 3800 University Avenue - Fairbanks, AK 99701

FAI TRACON.....*walt clayton*.....456-3050
 Gary L. Christiansen.....~~452-3337~~
 3800 University Avenue - Fairbanks, AK 99701

FWL FSS.....(See MCG FSS).....211
 Farewell, AK 99695

GKN FSS.....Richard Mathews.....822-3236
 P.O. Box 6 - Glenallen, AK 99588

HOM FSS.....John Ruth.....235-8588
 P.O. Box 238 - Homer, AK 99603

ILI FSS.....(See AKN FSS).....571-1240
 Iliamna, AK 99606

JNU ATCT.....Robert Nelson.....789-7359
 Route 5, Box 2155 - Juneau, AK 99803

JNU FSSRoy E. Hoyt.....789-7351
Route 5, Box 2155 - Juneau, AK 99803

ENA ATCT.....John C. Arsenault.....283-7245
Drawer B - Kenai, Ak 99611

ENA FSS.....Elmer W. Knight.....283-7215
Drawer B - Kenai, AK 99611

KTN FSS.....Henry A. Bayeur.....225-3531
P.O. Box 8440 - Ketchikan, AK 99901

AKN ATCT.....Robert Davis.....246-3311
P.O. Box 67 - King Salmon, AK 99613

AKN FSS.....June Turner.....246-3454
P.O. Box 67 - King Salmon, AK 99613

ADQ ATCT.....Wayne Bates.....487-4339
Box ~~37~~⁸⁰⁵, USCG Base - Kodiak, AK ~~99619~~⁹⁹⁶¹⁵

OTZ FSS.....Martin Pederson.....442-3755
P.O. Box 42 - Kotzebue, AK 99572

MCG FSS.....Richard Forsgren.....524-3935
P.O. Box 107 - McGrath, AK 99627

MRI ATCT.....Ron Barnes.....277-0211
701 C Street, Box 14 - Anchorage, AK 99513

OME FSS.....Louise C. Long.....443-2502
P.O. Box 340 - Nome, AK 99762

ORT FSS.....Alvin Nowland.....778-6611
Northway, AK 99764

PAQ FSS.....(See ANC FSS).....745-3269
P.O. Box S - Palmer, AK 99645

SIT FSS.....Homer Sutter.....966-2929
P.O. Box 4507 - Sitka, AK 99835

TKA FSS.....(See ANC FSS).....733-2277
Talkeetna, AK 99676

TAL FSS.....(See FAI FSS).....366-7288
P.O. Box 81 - Tanana, AK 99777

VDZ CS/T.....Gary Near.....835-4602
Box 428 - Valdez, AK 99686

YAK FSS.....James Jensen.....784-3314
P.O. Box 307 - Yakutat, AK 99689

4382

1100

AIRWAY FACILITIES

ANC AFS.....Frank Babiak.....243-2348
4500 West 50th - Anchorage, AK 99502

ANC AFI.....Dwight Meeks.....243-1525
5200 West International Airport Road - Anchorage, AK 99502

ZAN AFS.....B. W. Franklin.....333-6565
5400 Davis Highway - Anchorage, AK 99506

BRW AF.....Robert Mitchell.....852-4566
P.O. Box 510 - Barrow, AK 99723

BET AF.....Ronald Kreh.....543-2235
P.O. Box 326 - Bethel, AK 99559

BTT AF.....Bob Pedigo.....692-5131
Bettles, AK 99726

BIG AF.....Manuel Hernandez.....873-1100
Mile 261, Richardson Highway - APO 98733 Intra Alaska Mail

BKA AF.....(See SIT AF).....747-9969
Box 4507 - Mt. Edgecumbe, AK 99835

CDB AF.....Monte Larsh.....532-2443
P.O. Box 38 - Cold Bay, AK 99571

CDV AF.....Pete LaPlante.....424-3252
P.O. Box 80 - Cordova, AK 99574

SCC AF.....Frank Kirnig.....659-2603
Pouch C - Fairbanks, AK 99701

DLG AF.....(See AKN AF).....842-5919
P.O. Box 207 - Dillingham, AK 99576

FAI AFS.....Paul W. Gallagher.....456-4600
5640 Airport Way - Fairbanks, AK 99701

FAI AFI.....Charles Crawley.....456-4525
3800 University Avenue - Fairbanks, AK 99701

FWL AF.....(See MCG AF).....211
Farewell, AK 99695

GAL AF.....Paul G. Jones.....656-1275
P.O. Box 359 - Galena, AK 99741


GKN AF.....(See PAQ AF).....822-5863
P.O. Box 6 - Glenallen, AK 99588

HOM AF.....James Leslie.....235-8550
P.O. Box 238 - Homer, AK 99603

DEPARTMENT OF TRANSPORTATION
FEDERAL AVIATION ADMINISTRATION
ALASKAN REGION

DIRECTOR

ROBERT L. FAITH

DEPUTY DIRECTOR

GARLAND P. CASTLEBERRY

PLANNING STAFF

ROBERT BALDWIN

to PC

PUBLIC AFFAIRS

CLIFFORD CERNICK

COMMUNICATIONS CONTROL CENTER

THOMAS O'MALIA

DCA

REGIONAL COUNSEL

DONALD H. BOBERICK

CIVIL RIGHTS STAFF

ANN TUCKER

to DCA

EXECUTIVE OFFICER

DONALD T. KEIL

FLIGHT STANDARDS DIVISION

ROBERT G. JUDD

Retired
9/19/80

AVIATION MEDICAL DIVISION

JOHN L. HEPLER, M.D.


AIRWAY FACILITIES DIVISION

A. B. BRUCK

PERSONNEL MANAGEMENT DIVISION


GEORGE B. WOODBURY JR.


ACCOUNTING DIVISION
VACANT

AIR TRAFFIC DIVISION

ROBERT F. HARIK

AIRPORTS DIVISION

ROBIE B. STRICKLAND

CIVIL AVIATION SECURITY DIVISION

ROBERT OLIVER

BUDGET DIVISION

ROBERT LEWIS

LOGISTICS DIVISION

MARGARET W. WALKER

MANAGEMENT SYSTEMS DIVISION

ALAN L. ARMSTRONG

TSFRD
DCA
8/70

to PC

ILI AF.....(See AKN AF).....571-1240
Iliamna, AK 99606

JOH AF.....(See CDV AF).....424-7206
P.O. Box 80 - Cordova, AK 99574

JNU AFS.....Harold R. Guthrie.....789-2193
P.O. Box 2157 - Juneau, AK 99803

JNU AFO.....Harvey Rogers.....789-7370
P.O. Box 2218 - Juneau, AK 99803

ENA AF.....Jim Carew.....283-7245
Drawer B - Kenai, AK 99611

KTN AF.....Paul Westcott.....225-5923
P.O. Box 8440 - Ketchikan, AK 99901

AKN AFS.....Carl E. Fundeen.....246-3312
P.O. Box 67 - King Salmon, AK 99613

ADQ AF.....Norman R. Clentimack.....487-5814
Box 37, USCG Base - Kodiak, AK 99619

OTZ AF.....Al Upickson.....442-3171
P.O. Box 42 - Kotzebue, AK 99752

LVD AF.....(See PSG AF).....772-4227
Pouch D - Petersburg, AK 99833

MCG AF.....James Large.....524-3155
P.O. Box 107 - McGrath, AK 99627

MRI AF.....Leon Chesler.....263-6533
2016 East 5th Avenue - Anchorage, AK 99501

MDO AF.....(See ANC AFS).....424-7594
5200 West International Airport Road - Anchorage, AK 99502

MPY AF.....Bob McMolin.....452-1411
Box 15 - APO 98750 Intra-Alaska Mail

OME AF.....Robert Salzman.....443-2226
P.O. Box 340 - Nome, AK 99762

ORT AF.....Albert L. Eggebrotten.....778-6444
Northway, AK 99764

PAQ AF.....Lee Ashworth.....745-3269
Box S - Palmer, AK 99645

PSG AF.....James McNerney.....772-3788
P.O. Box 909 - Petersburg, AK 99833

SSR AF.....(See JNU AFO).....586-6609
P.O. Box 1227 - Juneau, AK 99802

SIT AF.....Sevard Wagenius.....966-2471
Box 4507 - Sitka, AK 99835

TAL AF.....(See GAL AF).....366-7289
P.O. Box 81 - Tanana, AK 99777

UNK AF.....(See OME AF).....624-3121
P.O. Box 207 - Unalakleet, AK 99684

VDZ AF.....(See CDV AF).....835-4602
P.O. Box 428 - Valdez, AK 99686

WRG AF.....(See PSG AF).....874-2043
Box 1169 - Wrangell, AK 99929

YAK AF.....Billy Trent.....784-3312
P.O. Box 307 - Yakutat, AK 99689

CIVIL AVIATION SECURITY

AAL-720A (CASFO).....Floyd J. Seeley.....243-4338
Box 6478 Annex - Anchorage, AK 99502

AAL-720B (HAZARDOUS MATERIALS).....Rex Morris.....248-2408
Box 6478 Annex - Anchorage, AK 99502

FLIGHT STANDARDS

ACDO-31.....Dexter Palk.....243-1902
5001 West International Airport Road - Anchorage, AK 99502

AMB.....Robert LaBelle.....243-1121
4610 West International Airport Road - Anchorage, AK 99502

EMFO (AAL-210).....Dayton O. Curtis.....271-5927
701 "C" Street, Box 14 - Anchorage, AK 99513

FIDO.....Thomas H. Wardleigh.....243-1987
Operations.....Glenn Minnich.....243-2394
Procedures.....Gorden Briscoe.....243-1260
4620 West International Airport Road - Anchorage, AK 99502

FSDO-61.....William Nelmes.....452-1276
3788 University Avenue - Fairbanks, AK 99701

FSDO-62.....Robert Culver.....789-0231
P.O. Box 2118 - Juneau, AK 99803

GADO-01.....Sidney Stone.....276-3939
1515 East 13th Avenue - Anchorage, AK 99501

ALPHABETICAL DIRECTORY

A

Aarnink, John L. ZAN ARTCC 333-6565
Abeldgaard, Marion S. HOM-AF 235-8550
Abrams, Alfred W. MCG-AF 524-3155
Adams, Edward C. CDV FSS 424-7644
Adams, Kent Curtis GADO-01 276-4016
Adams, Marjorie E. CDV FSS 424-7644
Agen, Dorothy A. AAL-710 271-5566
Ah Lo, Alice H. ANC FSS/IFSS 263-6528
Akola, Eric Henry ZAN ARTCC 333-6565
Aldrighette, Arthur ZAN ARTCC 333-6565
Alexander, Terry L. AAL-62 271-5299
Alfsen, Marylyn E. AAL-55A 271-5860
Allahyari, Vivienne J. AKN FSS 246-3454
Allen, James D. GKN FSS 822-3236
Allen, Solveig W. CDB FSS 532-2454
Allred, David L. OTZ FSS 442-3755
Alyea, Carol J. AMB-5 243-1121
Amberger, Joe O. AAL-720A 243-4338
Ambrose, Linda L. AAL-500 271-5885
Ambuehl, Duane G. FAI FSS 452-5388
Amer, Ahmad AAL-690 271-5461
Ames, Paul H. FSDO-61 452-1276
Amos, Douglas L. ANC TRACON 243-4575
Anagick, Lowell V., Jr. BET—AF 543-2235
Anderson, Barbara J. MRI-AF 263-6535
Anderson, Carl N. ZAN-AF 333-6565
Anderson, Edgar W. ANC-AFI 243-1525
Anderson, Harold L. BIG-AF 873-1100
Andrews, Steve E. MRI-AF 263-6535
Angel, Otis D. AAL-451 243-3900
Angle, Lois A. ZAN-AF 333-6565
Angle, Richard L. AAL-20 271-5231
Angleton, Vivien L. OME-AF 443-2226
Angnabooguk, Wilson OME-AF 443-2226
Archibald, John M. ANC TRACON 243-4575
Arehart, Katherine E. AAL-500 271-5885
Armstrong, Alan L. AAL-60 271-5171
Arnold, Diane M. GADO-01 276-3939
Arnold, Richard S. FIDO 243-1987
Arnold, Robert E. FAI AF 456-4600
Arnold, William L. AAL-432 271-5305
Arsenault, John C., Jr. ENA TWR 283-7245
Artley, John C. OTZ FSS 442-3755
Ashworth, Edmond L. PAQ-AF 745-3269
Atchley, Otha H. MRI-AF 263-6535
Atkins, Robert L. BET-AF 543-2235
Aube, William A. AAL-4300 271-5348
Austermuhl, Holly J. ZAN ARTCC 333-6565
Austin, Frank AAL-4 271-5287
Austring, Roberta G. ZAN ARTCC 333-6565
Ayer, Bruce E., Jr. ANC FSS/IFSS 263-6528

B

Babiak, Debra A. ANC FSS/IFSS 263-6528
Babiak, Frank Jr. ANC-AF 243-2348
Backman, Olli B. ZAN ARTCC 333-6565
Baggett, Helen L. AAL-610 271-5440
Bagley, Mary A. AAL-61 271-5302
Bailey, Doris M. SIT-AF 966-2471
Bailey, Roy SIT-AF 966-2471
Bain, James R. ANC TRACON 243-4575
Baker, David MCG-AF 524-3155
Baker, Robert F. BKA-AF 747-9969
Baldwin, Harry E. AAL-452 243-2633
Baldwin, Robert J. AAL-4 271-5284
Ball, Jerry W. ANC FSS/IFSS 263-6528
Ballesteros, Joe E. ANC TRACON 243-4575
Bandy, Goldman C. BIG FSS 872-3101
Barber, Forest FAI AF 456-4600
Barber, Hugh F. AAL-432 271-5318
Barnes, Milam Leon MCG-AF 524-3155
Barnes, Roger D. FAI TRACON 456-8452
Barnes, Ronald B. MRI TWR 277-0211
Barnett, Richard E. AAL-210 271-5934
Barney, Jack L. SIT AF 966-2471
Barr, Edd W. AAL-55B 271-5845
Barr, Roger A. SIT FSS 966-2929
Bartholomew, David F., II AAL-54A 243-1553
Barto, James AMB-2 243-1121
Bassler, John R. AAL-530 *515* 271-5890 *5901*
Bates, Ernest W. ADQ TWR 487-4339
Bathon, Lawrence M. ADQ TWR 487-4339
Batt, Maurice W. DLG FSS 842-5275
Bauernschmidt, Gale K. AAL-52C 271-5388
Bauers, John A. MRI TWR 277-0211
Bayeur, Henry A., Jr. KTN-FSS 225-3531
Beam, William J. BIT FSS 692-5533
Beaman, James P. MPY-AF 452-1411
Bean, Margaret M. AAL-620 271-5451
Bean, William JNU-AFO 789-7370
BEckner, Peter E. GADO-01 276-4016
Bedford, Wallace B. ANC FSS/IFSS 263-6528
Belanger, Gerard H. ZAN ARTCC 333-6565
Beleal, Harriet B. AAL-422 271-5829
Belisle, Lawrence R. BIG FSS 872-3101
Bellamy, Kenneth A. AAL-24B 271-5247
Belluomini, Umberto AAL-67 271-5188
Beltz, Gerald L. ANC-AFI 243-1525
Bennett, Charles R. ANC FSS/IFSS 263-6528
Bennett, Cherlyn Dee AAL-30 271-5274
Bennett, John P. ZAN ARTCC 333-6565
Benotti, James W. ZAN ARTCC 333-6565
Benson, Bruce E. AAL-451 271-5318 *8*
Berglin, John A. FAI FSS 452-5388

Bergstedt, Carl W. ANC-AF 243-2348
 Bernaldo, Noel S. AAL-4300 271-5348
 Bernard, John N. ENA TWR 283-7245
 Bernardini, Joseph A. AAL-55A 271-5858
 Berry, Frank E. AAL-453 271-5220
 Berry, George J. AAL-24B 271-5243
 Besanceney, Robert E. ZAN ARTCC 333-6565
 Best, Barry FAI TRACON 456-8452
 Best, Dale A. ZAN ARTCC 333-6565
 Bethel, Michael D. YAK-AF 784-3312
 Bettinger, Edward H. GADO-01 276-4018
 Betts, Darold Mike FAI FSS 452-5388
 Biesemeyer, Fred ZAN-AF 333-6565
 Bigler, Stuart G., Jr. AAL-500 271-5885
 Bill, Laurel A. AKN-AF 246-3312
 Billiet, Edgar P. ANC-AF 243-2348
 Birch, E. Patricia ZAN ARTCC 333-6565
 Bird, Larry S. AMB-4 243-1121
 Blackburn, Mary A. ZAN-AF 333-6565
 Blackwell, Dorothy M. AAL-220 271-5403
 Blahut, Jeanne K. ANC FSS/IFSS 263-6528
 Blahut, Robert J. ZAN ARTCC 333-6565
 Blair, Arnold PAQ FSS 745-3269
 Blair, Mark A. ZAN ARTCC 333-6565
 Blair, Sharon D. AAL-55B 271-5842
 Blake, Maxine A. JNU-AF 789-2193
 Bliss, Gordon A. ENA FSS 283-7215
 Blood, Derryl W. HOM FSS 235-8588
 Blum, Walter K. MRI-AF 263-6538
 Boberick, Donald H. AAL-7 271-5269
 Boedecker, George W. AAL-453 271-5225
 Boehler, Leslie R. AAL-24A 271-5237
 Bolton, Marcia D. MRI-AF 263-6538
 Bolzern, Nelly A. AAL-62 271-5173
 Bonner, Betty J. AAL-16 271-5367
 Booher, Barbara A. AAL-54D 271-5391
 Booker, Raymond W. AMB-4 243-1121
 Boswell, Joseph H. MRI-AF 263-6533
 Bottini, Richard J. ACDO-31 243-1902
 Bourdeau, Wilfred C. AAL-451 243-3900
 Bowlin, Gerald A. AAL-451 243-3900
 Bowman, Howard N. ILI FSS 571-1240
 Boyd, Robert A. ANC TRACON 243-4575
 Boyette, Rex W. FAI AFI 456-4525
 Boyle, John F. ANC TRACON 243-4575
 Braden, Audrey AAL-60 271-5171
 Bradford, Joan M. AAL-24A 271-5238
 Braendel, Arthur W. AAL-432 271-5306
 Braman, Verne B. MDO-AF 424-7594
 Braun, Laverne A. ANC-AFI 243-1525
 Bremer, Phyllis M. FAI FSS 452-5388
 Brenton, Cynthia S. ANC FSS/IFSS 263-6528
 Bridges, Steven G. ANC-AFI 243-1525
 Brindley, Richard W. AAL-67 271-5182
 Briscoe, Gordon D. FIDO 243-1260
 Brister, John D. AAL-52 271-5382
 Britton, Howard E. FAI AFI 456-4525
 Bronner, John D. ZAN ARTCC 333-6565
 Brookman, Gerald R. ENA-AF 283-7245
 Brooks, Lavern K. AAL-463 271-5799
 Brophy, Victor L., Jr. AAL-463P1 243-3900
 Brown, Clifford B. ZAN-AF 333-6565
 Brown, David A. BET FSS 543-2230

Brown, Harold W., Jr. AAL-52B 271-3571
 Brown, Harry J. ZAN ARTCC 333-6565
 Brown, Lawrence C. ZAN ARTCC 333-6565
 Brown, Margaret P. ANC FSS/IFSS 263-6528
 Brown, Maribeth C. ANC-AF 243-2348
 Brown, Wayne T. ZAN ARTCC 333-6565
 Brown, William J., Jr. BET FSS 543-2230
 Bruck, Alfred B. AAL-400 271-5616
 Bruesch, William W. AAL-463E1 243-2642
 Brumbelow, Donald W. ZAN ARTCC 333-6565
 Brunner, Robert D. AAL-67 271-5186
 Brunner, Joseph R. HOM-AF 235-8550
 Brunson, Gloria J. AAL-52D 271-3569
 Buchanan, Henry B. BET FSS 543-2230
 Buchanan, Keith W. FAI AF 456-4600
 Buck, Veryle B. OTZ-AF 442-3171
 Buckley, James E. TAL FSS 366-7288
 Buckley, Joseph J. MPY-AF 452-1411
 Bull, William C., Jr. FAI AF 456-4600
 Bullock, Robert B. FAI TRACON 456-8452
 Bullock, Ronald H. AKN-AF 246-3314
 Bunch, Billy J. AMB-4 243-1121
 Burch, Chester K. CDB FSS 532-2454
 Burch, Sonya F. CDB FSS 532-2454
 Burge, Brenda E. ZAN ARTCC 333-6565
 Burger, James W. ZAN-AF 333-6565
~~Burger, Pamela AAL-500A 271-5464~~
 Burkevich, Walter Jr. ZAN ARTCC 333-6565
 Burnette, Charles W., Jr. ANC TRACON 243-4575
 Burns, Mary D. AAL-463P1 243-1976
 Burns, Wendell R. ZAN-AF 333-6565
 Burt, Anne A. AAL-54D 271-5391
 Burton, James A. ART FSS 778-6611
 Bushnell, Jerome P. AAL-220 271-5403
 Buss, Larry D. CDB FSS 532-2454
 Butler, Robert G. FAI FSS 452-5388
Byers, Jo Ann - 460 5298
C 61
 Caldwell, Kathilee JNU TWR 789-7359
 Caldwell, Mark A. DLG FSS 842-5275
 Campbell, Aurora A. MRI TWR 277-0211
 Campbell, David W. ANC FSS/IFSS 263-6528
 Campbell, Fredrick L. AAL-67 271-5185
 Campbell, Kenneth C. AAL-463P1 243-3900
 Carda, Richard John FAI FSS 452-5388
 Cardinal, Jeffrey P. ZAN ARTCC 333-6565
 Carew, James R. ENA-AF 283-7245
 Carey, Mary Ann MRI TWR 277-0211
 Carmichael, Ruth Y. ZAN ARTCC 333-6565
 Carpenter, Roger W. ANC TRACON 243-4575
 Carr, Kathleen M. AAL-16 271-5367
 Carrick, Linda G. AAL-52 271-5380
 Carroll, Clifford J. AAL-431 271-5331
 Carroll, Gail L. ANC FSS/IFSS 263-6528
 Carson, William E. FAI AF 456-4600
 Carswell, Ann N. BTT FSS 692-5533
 Carter, Chandler D. GADO-01 276-4016
 Casey, Victor H. AMB-3 243-1121
 Castleberry, Garland P. AAL-2 271-5645
 Cenac, Gregory J. AAL-431 271-5315
 Cernick, Clifford AAL-5 271-5296

Davis, Robert T. ANC FSS/IFSS 263-6528
Davis, Sonya A. AAL-14 271-5223
Davis, Yvonne L. ZAN ARTCC 333-6565
Daymude, Robert L. MRI TWR 277-0211
Dean, Norma J. AKN-AF 246-3312
Deane, Harold M. AAL-463P1 243-3900
Deborde, Clarence W. CDB-AF 532-2443
Degarmo, Ronald F. ZAN-ARTCC 333-6565
Deignan, Michael P. ZAN ARTCC 333-6565
Delong, Joseph Wm. AMB-4 243-1121
Delp, Kenneth T. ZAN ARTCC 333-6565
Demarco, Teresa L. ZAN ARTCC 333-6565
Demientieff, Arnold H. ANC-AF 243-2348
Deming, Steven H. AAL-451 271-5211
Demoski, Lillian S. AAL-55B 271-5847
Deneen, Daniel L. BIG-AF 873-1100
Denman, Cynthia E. ZAN ARTCC 333-6565
Dennis, Arthur L. ZAN-AF 333-6565
Denson, Wiley D. ZAN ARTCC 333-6565
Denton, Willard H. MRI-AF 243-4103
Depalmer, George P. AAL-430 271-5353
Derry, James S. AAL-720B 248-2408
Detillo, Ronald A. ZAN ARTCC 333-6565
Deveraux, Gregory L. ZAN ARTCC 333-6565
Devlin, Donald J. AMB-3 243-1121
Devries, Cheryl AAL-558 271-5848
Dhabolt, Starr L. ANC FSS/IFSS 263-6528
Di Paul, Carolyn Marie AAL-690 271-5457
Dial, Norman B. ZAN-AF 333-6565
Diamond, Richard V. ZAN ARTCC 333-6565
Dias, David T. AAL-452A 243-2633
Dittlinger, James E. ZAN ARTCC 333-6565
Dixon, Ruby J. AAL-463 271-5792
Dodd, Carolyn Z. AAL-210 271-5927
Dodd, Dennis Chip JNU FSS 789-7351
Dodd, Eric L. ZAN ARTCC 333-6565
Dodd, Henry F. AAL-530 271-5892
Dolan, Robert E. ANC TRACON 243-4575
Dolan, Thomas C. ACDO-31 243-1902
Dolan, William A. AAL-430B 271-5343
Dome, Tommy L. AAL-720A 243-4338
Don, Peggy A. AAL-300 271-5431
Donnelly, Edward E. FSDO-62 789-0231
Donohoe, Paul S. AAL-250 271-5914
Dorr, Donald R. JNU-AF 789-2193
Dorris, Terry Ray FAI TRACON 456-8452
Dorsey, Edwin H. ANC FSS/IFSS 263-6528
Dorsey, Maurice E. DLG-AF 842-5919
Dossett, William H. AAL-4300 271-5348
Dotomain, Walter E. OME FSS 443-2502
Dotson, William J. ANC-AF 243-2348
Double, Dennis AAL-463E1 243-2642
Dougherty, William N. MRI-AF 263-6535
Downing, Michael S. BKA-AF 747-9969
Drake, William I. FAI TRACON 452-3337
Draper, Lawrence ZAN ARTCC 333-6565
Dreyer, Walter R., Jr. AAL-67 271-5180
Dubber, Theresa L. CDB FSS 532-2454
Dubord, Allen J. FAI AFI 456-4525
Dunlap, Robert J. ANC-AFI 243-1525
Dunn, Allison E. ZAN ARTCC 333-6565
Dunn, Bob P. AAL-451 243-3900
Dunn, Gerald F. BET FSS 543-2230

Durand, Duane C. AKN-AF 246-3417
Durand, Robert C. ZAN ARTCC 333-6565
Durand, Steven C. GAL-AF 656-1275
Durham, Harold FAI AFI 456-4525
Durych, Robert R. AAL-210 271-5930
Dyke, Stephen C. ANC FSS/IFSS 263-6528
Dykstra, Michael FSDO-61 452-1276

E

Eakon, Monroe ANC-AFI 243-1525
Earley, Hilton C. ANC FSS/IFSS 263-6528
Eaton, Kenneth MPY-AF 452-1411
Eddins, Harold A. ZAN-AF 333-6565
Edens, James M. AKN-Af 246-3450
Edwards, Alfred C. AAL-422A 277-0589
Edwards, Garry KTN AF 225-5923
Edwards, George A. AAL-463P1 243-1984
Edwards, Leland S., Jr. AAL-7 271-5269
Edwards, Lester D. BRW-AF 852-4566
Edwards, Richard Allen, Jr. CDB-AF 532-2443
Edwards, Richard C. MRI-AF 263-6535
Edwards, Willie J. AMB-5 243-1121
Eggebroten, Albert L. ORT-AF 778-6444
Eidem, Gene G. AAL-463 271-5798
Elias, Henry A. AAL-510 271-5878
Elias, Hilda L. AAL-22A 271-5252
Elledge, William P., Jr. BTT-AF 692-5131
Elliston, Davie M. AAL-52D 271-5383
Elzig, Robert E. AAL-430C 271-5347
Enberg, Vernon H. AMB-2 243-1121
Epperson, Kenneth R. AMB-3 243-1121
Erhart, Roy F. ILI FSS 571-1240
Erickson, Earl A. ENA FSS 283-7215
Erickson, Frederick F. ZAN ARTCC 333-6565
Ericson, Richard A. BIG FSS 872-3101
Ernst, Robert A. ANC TRACON 243-4575
Eskridge, James R. AAL-463A 271-5805
Estes, Clarence L. ANC FSS/IFSS 263-6528
Eubanks, Melvin G. OME-AF 443-2226
Evanoff, Larry M. ANC TRACON 243-4575
Evans, Philip B. FSDO-61 452-1276
Evans, Wilfred P., Jr. TAL-AF 366-7289

F

Faas, Daniel P. BTT-AF 692-5131
Fadaoff, Joseph F. AAL-54A 243-1553
Fairchild, Robert E. ENA-AF 283-7245
Faircloth, Sharon K. BIG-AF 873-1100
Faith, Robert L. AAL-1 271-5645
Falke, Kay O. ZAN ARTCC 333-6565
Fall, Clyde R. AAL-52E 243-1252
Fallon, Kathleen M. ZAN ARTCC 333-6565
Farquhar, William B. AAL-24 271-5235
Faulkner, Helen M. ZAN ARTCC 333-6565
Fears, Edgar M. GAL-AF 656-1275
Fechner, Frederick K. FIDO 243-1987
Fechner, Phyllis A. ANC FSS/IFSS 263-6528
Feehan, Terry L. ZAN ARTCC 333-6565
Feind, Gretchen A. KTN-FSS 225-3531

Fenton, Janet L. AAL-453	271-5217	Frye, Wesley R., Jr. AAL-463P1	243-3900
Fenwick, Thomas F. AAL-463	243-1121	Fujimori, Jerome K. CDB-AF	532-2443
Ferguson, John A. BTT-AF	692-5131	Fullmer, Dale B. ANC-AFI	243-1525
Ferguson, Kenneth D. ZAN ARTCC	333-6565	Fundeen, Carl E. AKN-AF	246-3312
Fiehler, George C. JNU-AF	789-2193	Fundeen, Carl W. ANC-AF	243-2348
Fields, Edgar A. ZAN-AF	333-6565		
Fields, Larry T. AKN-AF	246-3311		
Figley, Marion J. AAL-510	271-5887		
Finlayson, James T. ANC-AF	243-2348		
Fischback, John E. ZAN-AF	333-6565		
Fischer, Paul L. AAL-205	271-5910		
Fisher, Neil L. GKN-AF	822-5863		
Fisher, Robert M. FSDO-62	789-0231		
Fitch, Robert ENA-AF	283-7245		
Fitzgaird, Joseph B. AMB-3	243-1121		
Fitzgerald, David A. ANC TRACON	243-4575		
Fitzsimmons, George R. JNU-AFO	789-7370		
Flaherty, John P. ZAN ARTCC	333-6565		
Fleck, Michael E. ZAN ARTCC	333-6565		
Fleece, Ernestine T. AAL-15	271-5725		
Fleener, Alfred E. GADO-01	276-4708		
Fleener, John R. AAL-463P1	243-3900		
Flournoy, Harriet A. AAL-10	271-3602		
Flower, Edwin T. ZAN-AF	333-6565		
Fluharty, Harry L. ANC TRACON	243-4575		
Flynn, Gerald L. CDV-AF	424-3252		
Flynn, Thomas J. AKN-AF	246-3310		
Fogel, Mary J. AAL-61	271-5301		
Foger, Daniel MCG-AF	524-3155		
Follett, Carla L. AAL-58	281-5868		
Fontaine, Carol A. ZAN ARTCC	333-6565		
Fontaine, E. Clark ZAN ARTCC	333-6565		
Foote, David E. AAL-67	271-5190		
Ford, Jimmy D. GKN-AF	822-5863		
Forsgren, Richard E. MCG FSS	524-3935		
Forsko, Morris FAI FSS	452-5388		
Forland, David C. AAL-55A	271-5862		
Forsyth, Ronald W. AAL-463	271-5788		
Forsyth, Ronald W., Jr. BET FSS	543-2230		
Forth, Randall G. FAI FSS	452-5388		
Fosson, Frederick C. CDB AF	532-2453		
Foster, Custer C., Jr. AMB-4	243-1121		
Foster, Deborah A. AAL-463E1	243-2642		
Foster, George W. ANC-AF	243-2348		
Foster, Roger E. AAL-500	271-5885		
Foster, Stanley E. ANC TRACON	243-4575		
Fournier, Gary F. ZAN ARTCC	333-6565		
Fouse, Helen M. ANC TRACON	243-4575		
France, Jackie J. ZAN-AF	333-6565		
Franceschini, John L. SIT AF	966-2471		
Francis, Rosetta ANC FSS/IFSS	263-6528		
Frank, Nelson D. SIT FSS	966-2929		
Franklin, Billy W. ZAN-AF	333-6565		
Franson, Elaine M. AAL-300	271-5431		
Fredenberg, John CDB-AF	532-2443		
Frederick, Donald G. AAL-463P1	243-3900		
Frederick, Sandra S. AAL-58	271-5876		
Fredrickson, Ralph A. FIDO	243-1987		
Free, James R. ZAN ARTCC	333-6565		
Freeman, Richard V. ANC-AF	243-2348		
Freitag, Herbert W. ZAN ARTCC	333-6565		
Freitag, Philip C. ZAN-AF	333-6565		
Froehle, Robert B. ZAN ARTCC	333-6565		
		G	
		Gadbois, Victor B. GADO-01	276-4708
		Galley, Mryon V. ZAN ARTCC	333-6565
		Gaines, Joel V. ANC-AF	243-2348
		Galick, Kenneth T. AKN-AF	246-3312
		Gallagher, Janell K. AAL-54	271-5397
		Gallagher, Paul W. FAI AF	456-4600
		Gallion, Terry L. MRI TWR	277-0211
		Gamache, Stephen P. ANC TRACON	243-4575
		Gange, Frank MRI-AF	263-6535
		Garcia, Michael J. JNU-AF	789-2193
		Gardner, Carolyn J. AAL-14	271-5474
		Garrett, Robert A. ZAN ARTCC	333-6565
		Garton, Gerald A. FAI TRACON	456-8452
		Garvin, Francis J. CDV-AF	424-3252
		George, Allen F. AAL-422	271-5829
		George, Cecil R. CDB-AF	532-2443
		George, Howard W., Jr. MCG FSS	524-3935
		Gerlitz, Stanley J. AKN TWR	246-3311
		Gerrin, James E. ANC-AF	243-2348
		Getz, Leon C. AAL-432	271-5310
		Gibson, Larry W. ZAN ARTCC	333-6565
		Gibson, Patricia E. AAL-64	271-5170
		Giles, Norma E. AAL-14	271-5757
		Gillen, James J. AAL-431	271-5340
		Gillis, Joan M. ANC-AF	243-2348
		Gilmore, Charles A. FAI AF	456-4600
		Gilmore, Harry F. AAL-432	271-5334
		Ginder, Johnny P. FAI TRACON	456-8452
		Girardet, Muriel L. AAL-67	271-5184
		Girt, Janet L. AAL-52B	271-5386
		Glasgow, Charles B. AMB-3	243-1121
		Glazier, Jane L. ORT-AF	778-6444
		Glisson, Truman L. FAI FSS	452-5388
		Glonek, Ronald B. ZAN ARTCC	333-6565
		Godsil, Michael E. LVD-AF	772-4227
		Godwin, Mark ZAN ARTCC	333-6565
		Gohl, Barbara L. AAL-61	271-5302
		Golden, Leo F. SIT FSS	966-2929
		Gommoll, Norman L., Jr. ANC TRACON	243-4575
		Goodrich, Paul E. GKN FSS	822-3236
		Gossen, Louis J. GADO-01	276-4016
		Graham, Fred C. ZAN-AF	333-6565
		Graham, John F. ZAN-AF	333-6565
		Grandfield, John R., Jr. FAI FSS	452-5388
		Grandwilliams, Richard FAI FSS	452-5388
		Grant, Margie L. Bartels AAL-500	271-5885
		Granthum, Dottie C. AAL-62	271-5177
		Grau, Leonard J., Jr. AAL-453	271-5222
		Gray, Charles D. ZAN ARTCC	333-6565
		Gray, David, Jr. ANC FSS/IFSS	263-6528
		Gray, Harvey B. FAI AFI	456-4525
		Greene, Fred OME-AF	443-2226
		Greenspan, Donald L. AAL-22B	271-5263
		Grefe, William H. ORT FSS	778-6611
		Gribble, Thomas F. FIDO	243-1987

Griffin, Joe G. AMB-3 243-1121
 Griffith, Richard AAL-620 271-5454
 Grindrod, Larry F. GADO-01 276-4016
 Grindrod, Mary C. AAL-300 271-5431
 Groeneveld, John H. AAL-530 271-5897
 Gruber, Jo Ann AAL-463 271-5838
 Gruber, John B. ZAN-AF 333-6565
 Grueber, Michael T. AAL-452 243-2633
 Guest, William F. FWL AF 211-
 Guthrie, Harold R., Jr. JNU-AF 789-2193

H

Hackett, Roger O. ZAN ARTCC 333-6565
 Hadfield, Robert G. AKN-AF 246-3419
 Haldane, Francis B. ZAN ARTCC 333-6565
 Hale, George D. KTN-FSS 225-3531
 Haley, John B. AAL-52B 271-5384
 Hall, Donald C. DLG FSS 842-5275
 Hall, Helen M. FAI AF 456-6141
 Hall, Rice E. ZAN-AF 333-6565
 Hallett, Charles A., Jr. ANC TRACON 243-4575
 Halloway, Donald G. AAL-30 271-5278
 Ham, Delbert D. AAL-461A 243-1121
 Hamilton, Bobby Wayne HOM FSS 235-8588
 Hamilton, Howell D. FIDO 243-1987
 Hamlin, Bernardine C. AAL-22B 271-5267
 Hammett, Gregory B. ANC TRACON 243-4575
 Hammond, Derwin R. ANC TRACON 243-4575
 Hammond, Monte G. AKN-AF 246-3314
 Hampton, William T. ZAN ARTCC 333-6565
 Hancock, John L., Jr. FAI AF 456-4600
 Hand, Richard C. FAI TRACON 456-8452
 Hansen, Allan B. AAL-450B 271-5198
 Hansen, Duwaine F. AKN-AF 246-3417
 Hansen, Gaynor G. CDV-AF 424-3252
 Hanson, Dale L. AAL-250 271-5908
 Hardin, Joyce L. AAL-30 271-5277
 Harik, Robert F. AAL-500 271-5464
 Harris, John C. ORT-AF 778-6444
 Harris, Michael ZAN ARTCC 333-6565
 Harrison, Cathie A. ANC TRACON 243-4575
 Harrison, James H. ZAN ARTCC 333-6565
 Hart, Daniel E. AAL-500 271-5885
 Hart, Joseph B. AAL-700 271-5563
 Hartley, Thomas H. ANC TRACON 243-4575
 Hartman, John R. FAI TRACON 456-8452
 Hartman, Margery A. AAL-14 271-5756
 Hartwick, John D. FAI FSS 452-5388
 Harvey, Karen J. PAQ-AF 745-3269
 Harvey, Lanson B. AAL-421 5.839 -271-5359
 Hatcher, John R. RADLO 752-4418
 Hawk, David C. E., Sr. AAL-14 271-5752
 Hawkins, Nora G. AAL-24B 271-5244
 Haycraft, Richard A. ZAN-AF 333-6565
 Haynes, John L. II ANC FSS/IFSS 263-6528
 Headley, Howard D. ANC TRACON 243-4575
 Hearn, David L. ZAN ARTCC 333-6565
 Heatherington, Barbara AAL-22A 271-5257
 Heck, Herbert L. AAL-461 271-5834
 Hedberg, Victoria H. ANC FSS/IFSS 263-6528
 Heiker, Fred E. ZAN ARTCC 333-6565

Heitkamp, Robert J. AAL-500 271-5885
 Heller, Sandra Lee FAI AF 456-4600
 Henkelman, Joel AKN-AF 246-3416
 Henry, Debra L. FSDO-62 789-0231
 Henry, James R. ANC TRACON 243-4575
 Hepler, John E. AAL-300 271-5431
 Herman, Frederick D. ZAN ARTCC 333-6565
 Hernandez, Manuel BIG-AF 873-1100
 Hess, Edwin C. PAQ FSS 745-3269
 Hester, Albert N. ANC FSS/IFSS 263-6528
 Hetherington, Jack L. SCC-AF 659-2603
 Hewey, Ronald L., Sr. AAL-24B 271-5242
 Hiatt, William Robert ZAN ARTCC 333-6565
 Hiatt, Earl J. AAL-451 243-3900
 Higgins, David P. FAI AFI 456-4525
 Hill, Kathryn D. GAL-AF 656-1275
 Hill, Phyllis K. AAL-460 271-5840
 Hill, Spencer Kenneth ANC FSS/IFSS 263-6528
 Hill, Stanford O., Jr. AAL-67 271-5183
 Hinga, Paul K. SIT FSS 966-2929
 Hinman, Herbert W. BET FSS 543-2230
 Hinton, Nicholas C. SIT FSS 966-2929
 Hirschert, Dorothy L. AAL-510 271-5891
 Hodges, James G. ZAN ARTCC 333-6565
 Hoff, Clifford J. CDB-AF 532-2443
 Hoffman, Ethel M. AAL-600 271-5438
 Hoffman, Robert L. ACDO-31 243-1902
 Hoffman, Ronald C. AAL-463 271-5782
 Hoffman, Stanley L. MCG-AF 524-3155
 Hofstrand, Gary Lee AAL-500 271-5885
 Hoggard, Calvin L. AAL-450C 271-5199
 Holcomb, James W. HOM FSS 235-8588
 Holdaway, Billy R. MCG FSS 524-3935
 Holland, Jacquelyn AAL-15 271-5722
 Hollifield, Ronald C. GADO-01 276-4016
 Holstrom, Nick, Jr. BIG-AF 873-1100
 Hoogerhyde, David W. AKN-AF 246-3310
 Horacek, Charles J. AAL-450D 271-5197
 House, Kimberly A. MRI TWR 277-0211
 House, Susan J. ANV TRACON 243-4575
 Howard, Oran F. DLG FSS 842-5275
 Howe, John A. ANV TRACON 243-4575
 Howlett, Steven E. ZAN ARTCC 333-6565
 Hoyt, Roy E. JNU FSS 789-7351
 Hudson, Jack L. SIT AF 966-2471
 Huffaker, Gerald L. ZAN ARTCC 333-6565
 Hughes, Dale WRG-AF 874-2043
 Hughes, James E. AAL-17 271-5379
 Hughes, John W. AKN-AF 246-3310
 Hughes, Max, Jr. ZAN ARTCC 333-6565
 Hughes, Gayle M. AAL-461 271-5791
 Hultt, Don L. ZAN-AF 333-6565
 Hull, Edward A. AAL-463 271-5791
 Hull, Richard N. II ADQ TWR 487-4339
 Hummel, John H. AAL-510 271-5888
 Humphries, Ruby J. FIDO 243-2394
 Hunsberger, Glenn L. AAL-463P1 243-3900
 Hunt, Joseph E., Jr. AAL-17.1 271-5376
 Hunze, Richard L. TKA FSS 733-2277
 Hunziker, Cecelia L. AAL-50C 271-5430
 Hurd, John E. FAI FSS 452-5388
 Hurley, Emery R. KTN AF 225-5923
 Hurst, Michael E. AAL-500 271-5885

Husek, Donald G. FAI FSS 452-5388
 Huskey, Lawrence J. ZAN ARTCC 333-6565
 Hussey, Elwood K. AAL-24B 271-5251
 Hutson, Bennie L. AKN-AF 246-3314

I

Ionita, Jon AAL-432 271-5319
 Ipock, William T. ANC FSS/IFSS 263-6528
 Irby, William Lyle ANC FSS/IFSS 263-6528
 Isaacs, Stanley M. JNU-AF 789-2193
 Ivanoff, Kermit J. OME-AF 443-2226
 Ivanoff, Ralph L. AMB-3 243-1121
 Iverson, Albert L., Jr. ZAN ARTCC 333-6565
 Ivey, Rosalie T. AAL-52E 243-1971

J

Jack, Benjamin AAL-463E1 243-2642
 Jack, Fred L. BET-AF 543-2235
 Jack, Glen William BET FSS 543-2230
 Jackson, Frank Jr. ZAN ARTCC 333-6565
 Jackson, Timothy AMB-3 243-1121
 Jacobs, Jean L. AAL-500 271-5885
 James, Alfred L. GADO-01 276-4708
 Janis, David M. AMB-4 243-1121
 Janis, William M. AMB-2 243-1121
 Jenkins, Thomas L. ZAN ARTCC 333-6565
 Jenks, Ethel L. ZAN ARTCC 333-6565
 Jensen, James I. YAK FSS 784-3314
 Jensen, Vard D. ALL-432 271-5317
 Jett, James W. ZAN ARTCC 333-6565
 Johanson, Christopher A. FAI TRACON 456-8452
 Johnson, Anthony W. CDB FSS 532-2454
 Johnson, Bertha R. AAL-55B 271-5855
 Johnson, Donald M. FAI TRACON 456-8452
 Johnson, Geraldine BET-AF 543-2235
 Johnson, Howard P. BIG-AF 873-1100
 Johnson, Jerrel J. AAL-52A 271-5390
 Johnson, Larry E. AAL-463E1 243-2642
 Johnson, Lorin N. BET-AF 543-2235
 Johnson, Marie E. AAL-55A 271-5861
 Johnson, Mary F. AAL-55A 271-5866
 Johnson, Mary Lou AAL-55B 271-5852
 Johnson, Rheta M. AAL-62 271-5174
 Johnson, Richard N. FAI AFI 456-4525
 Johnson, Susan L. FAI AF 456-4600
 Jones, Clare R. AAL-22B 271-5264
 Jones, Danny M. AAL-67 271-5190
 Jones, Deanette F. ZAN ARTCC 333-6565
 Jones, Dwight D. CDB-AF 532-2443
 Jones, Edward E. ZAN-AF 333-6565
 Jones, George L. ZAN ARTCC 333-6565
 Jones, Jerry P. ZAN ARTCC 333-6565
 Jones, Paul G. GAL-AF 656-1275
 Jones, Paul M. PAQ-AF 745-3269
 Jones, Perley J. AAL-461 271-5837
 Jones, Roland A. MRI-AF 263-6535
 Jones, Roland E. ANC-AF 283-7245
 Jones, Wayne E. HOM-AF 235-8550
 Jordan, John S. ZAN ARTCC 333-6565

Joritz, Carl E. ANC TRACON 243-4575
 Joswick, Richard J. ANC TRACON 243-4575
 Jovanovich, Ronald MRI TWR 277-0211
 Joy, Donald R. ZAN ARTCC 333-6565
 Joy, Mayra F. AAL-55C 271-5401
 Judd, Floyd L. ZAN-AF 333-6565
 Judd, Robert G. AAL-200 271-5514

K

Kaletka, Jeanne Sue FIDO 243-1987
 Kanen, Garth M. JNU-AF 789-2193
 Kang, Patricia J. ZAN ARTCC 333-6565
 Kassa, Randy J. ZAN ARTCC 333-6565
 Katelnikoff, Sandra M. AAL-22A 271-5258
 Kauffman, Richard P. ANC FSS/IFSS 263-6528
 Keener, Ernest A. GADO-01 276-4708
 Keil, Donald T., Jr. AAL-3 271-5649
 Kellerman, Dale E. ZAN ARTCC 333-6565
 Kelliher, Mark J. ZAN-AF 333-6565
 Kelliher, Patrick B. OME FSS 443-2502
 Kelly, Charles F. ANC FSS/IFSS 263-6528
 Kenney, Barbara A. AAL-421 271-5361
 Kerber, Patrick R. ZAN ARTCC 333-6565
 Kiehl, Cyril L. ANC FSS/IFSS 263-6528
 Kihle, Bruce C. FAI AF 456-4600
 Killian, Kenneth L. ZAN ARTCC 333-6565
 Kimball, Phillip E. ENA-Af 277-0318
 Kincheloe, Allen M., Jr. AKN-AF 246-3314
 King, Alvis B. FAI AF 456-4600
 King, Clifford R. ILI AF 571-1241
 Kinney, Thomas W. ZAN ARTCC 333-6565
 Kirkpatrick, Wilma M. AMB-5 243-1121
 Kirnig, Frank E. SCC-AF 659-2603
 Kiss, Edward M. FAI AFI 456-4525
 Kiss, Kevin W. ZAN ARTCC 333-6565
 Kittrick, Patrick B. AAL-450 271-5145
 Kline, John T. MRI TWR 277-0211
 Klouda, Frederick E. ACDO-31 243-1902
 Knapp, Ann M. AAL-432 271-5303
 Knapp, Jacob C. ACDO-31 243-1902
 Knecht, Koren K. AMB-1 243-1121
 Knight, Elmer W. ENA FSS 283-7215
 Knowlton, Marvin K. OME-AF 443-2226
 Knutzen, Audree H. FAI TRACON 456-8452
 Koenig, Gerard M. ZAN ARTCC 333-6565
 Koenig, William E. GADO-01 275-4016
 Konefal, Arthur J. AAL-500 271-5885
 Konklin, Thomas G. ZAN ARTCC 333-6565
 Koprowski, Richard M. AAL-15 271-5726
 Kornells, Neal JNU-AF 789-2193
 Korol, George AKN-AF 246-3450
 Koutchak, Donald L. OTZ FSS 442-3755
 Kowalke, Alta May CDV-AF 424-3252
 Kowchee, Ralph M. OME-AF 443-2226
 Krall, Robert G. AAL-463P1 243-3900
 Krause, James L. ENA TWR 283-7245
 Kreh, Ronald W., Sr. BET-AF 543-2235
 Kreider, Irvin L. BET-AF 543-2235
 Kremer, Harold L., Jr. CDB-AF 532-2443
 Kretsinger, Alice E. AAL-6 271-5939
 Kubitz, Daniel F. MRI TWR 277-0211

Kucera, Thomas J. AMB-2 243-1121
 Kuehnoel, Marvin R. AAL-463P1 243-1984
 Kulikowski, Alexander J. ZAN ARTCC 333-6565
 Kurosaki, Katsuki AAL-463P1 243-1984
 Kurth, Stephen D. AAL-610 271-5449
 Kusick, Marlene A. ZAN ARTCC 333-6565
 Kusick, Shane A. AAL-500 271-5885
 Kuster, Louis V. AAL-452 243-2633
 Kyle, Charles L. AAL-451 271-5209
 Kytonen, Mark E. MCG FSS 524-3935

L

La Grone, Nicholas B. BET FSS 543-2230
 Labardini, Gabriel P. ANC FSS/IFSS 263-6528
 Labelle, Robert W. AMB-1 243-1121
 Lachapelle, Mark A. BET FSS 453-2230
 Lachiewicz, Gerard A. ZAN ARTCC 333-6565
 Lacy, Harry A. MCG FSS 524-3935
 Lakshas, Jeffrey F. FAI FSS 452-5388
 Lamkin, Bobby J. AAL-510 271-5889
 Lamson, Orville F. AAL-452 243-2633
 Landers, Keith E. AAL-422A 277-0589
 Lang, Duwayne A. JNU FSS 789-7351
 Lansdowne, Richard D. SCC-AF 659-2603
 Laplante, Peter J. CDV-AF 424-3252
 Large, James R. MCG-AF 524-3155
 Larsh, Monte M. CDB-AF 532-2443
 Larson, Paul A. AAL-610 271-5440
 Lathan, Freeman L., Jr. AAL-510 271-5882
 Lauver, Fay R. AAL-421 271-5358
 Laux, Andrew L. ANC TRACON 243-4575
 Laviolette, Dorothy M. AAL-24B 271-5249
 Lawrence, Clifton E. ANC-AFI 243-1525
 Lawrence, John P. AAL-432 271-5333
 Lawson, Carolyn R. FAI AF 456-4600
 Leary, Timothy E. ANC FSS/IFSS 263-6528
 Lebarron, Tracy E. JNU-AFO 789-7370
 Lebhart, Marc W. ZAN ARTCC 333-6565
 Lee, Derald R. AMB-4 243-1121
 Lee, Jacki A. AAL-24A 271-5241
 Lefler, Steven D. PSG-AF 772-3788
 Lehman, Richard H. ANC FSS/IFSS 263-6528
 Leigh, Carolyn M. FSDO-61 452-1276
 Lein, Stephen M. AAL-463E1 243-2642
 Lenseth, Arthur L. AAL-52E 243-1992
 Lent, Gerald CDB FSS 532-2454
 Leon Guerrero, Peter P. ZAN-AF 333-6565
 Leonard, Eric R. MCG-AF 524-3155
 Leonard, Jack T. ANC FSS/IFSS 263-6528
 Leskinen, Melvin C. AAL-463A 271-5806
 Leslie, James HOM-AF 245-8550
 Lester, Kenneth R. ADQ-AF 487-5814
 Lewis, Anne Q. BET FSS 543-2230
 Lewis, Joleen D. ANC-AF 243-2348
 Lewis, Richard D. AAL-463P1 243-3900
 Lewis, Robert N. AAL-30 271-5274
 Lewis, William H. LVD-AF 772-4227
 Liddington, David L. ZAN ARTCC 333-6565
 Lien, Milton Perry SCC-AF 659-2603
 Lilley, Harry D. FAI AF 456-4600
 Lindly, Grady A. ZAN ARTCC 333-6565

Liss, Charles R. SCC-AF 659-2603
 Liston, Melissa D. AAL-431 271-5321
 Little, Thomas G. ZAN ARTCC 333-6565
 Lockard, James N. ANC FSS/IFSS 263-6528
 Loell, Herbert AAL-452 243-2633
 Logan, Thomas E. ADQ-AF 487-5814
 Long, C. Louise FAI FSS 452-5388
 Long, David Mark AAL-500 271-5885
 Long, Ronald N. YAK-AF 784-3312
 Lord, Julia A. AAL-1 271-5646
 Lord, Thomas J. AAL-463P1 243-1984
 Love, Virgil C. ZAN ARTCC 333-6565
 Lovell, Larry S. ZAN ARTCC 333-6565
 Lower, Mark J. ANC TRACON 243-4575
 Lucas, Daniel E. BIG AF 873-1100
 Lucore, Girard W. ZAN ARTCC 333-6565
 Luecke, Henry B. AAL-463 271-5779
 Luedtke, David P. ADQ TWR 487-4339
 Luiten, Teresa J. AAL-14 271-5750
 Lukacinsky, Robert J. AAL-452 243-2633
 Lund, Charles W. ACDO-31 243-1902
 Lykstad, N. Audrey JNU-AF 789-2193
 Lynch, Henry P. MPY-AF 452-1411
 Lynd, Jon S. ANC-AFI 243-1525

M

MacDonald, John J. AAL-452 243-2633
 Macey, Robert V. GAL-AF 656-1275
 Maciariello, Edward P. ANC-AFI 243-1525
 Mack, Ernest W. ANC-AFI 243-1525
 Macon, Billy R. AAL-52E 243-1971
 Madison, Katherine M. JNU FSS 789-7351
 Mahoney, Jean R. AAL-7 271-5269
 Mahrt, Marvin E. AAL-510 271-5890
 Maier, Francis H. MCG-AF 524-3155
 Mailander, Harold R. FAI AF 456-4600
 Maines, Marilyn G. ANC FSS/IFSS 263-6528
 Maines, Ronald D. FIDO 243-1987
 Major, Robert E. JNU TWR 789-7359
 Maki, Richard I. AAL-431 271-5330
 Malenowski, Charles A. AKN-AF 246-3450
 Magniapane, Steve A. AAL-210 271-5931
 Mann, James S. CDV-AF 424-3252
 Mansholt, Heiko A. ZAN ARTCC 333-6565
 Maris, Irene M. AAL-530B 271-3625
 Markel, Dennis W. ANC-AFI 243-1525
 Markovich, Andrew T. JNU-AFO 789-7370
 Marks, Clark W. SCC-AF 659-2603
 Marley, Ray E. FAI AF 456-4600
 Marsh, Randy G. ZAN ARTCC 333-6565
 Marshall, Jeanette A. AAL-55B 271-5846
 Marshall, Kenneth M. BET FSS 543-2230
 Marshall, Suzanne P. FAI AFI 456-4525
 Martens, Neil H. AAL-451 271-5206
 Martin, Anna L. ADQ-AF 487-5814
 Martin, Dewey W. FIDO 243-1260
 Martin, Joseph P., Jr. OME FSS 443-2502
 Martin, Kenneth R. ENA FSS 283-7215
 Martinez, Betty C. AAL-3 271-5648
 Martinez, Pamela K. AAL-20 271-5232
 Masek, Robin J. AAL-431 271-5327

Masuhara, Ruthie Ann AAL-430	271-5351	Mickles, Howard FAI FSS	452-5388
Matejcek, Mary Evelyn ZAN ARTCC	333-6565	Middleton, Truman FSDO-31	452-1276
Matheson, John B. JNU TWR	789-7359	Miller, Carolyn ACDO-31	243-1902
Mathews, Lloyd L. ANC-AFI	243-1525	Miller, Charles E. ZAN-AF	333-6565
Mathews, Richard D. GKN FSS	822-3236	Miller, David E. ZAN ARTCC	333-6565
Mathis, Katherine M. AAL-14	271-5747	Miller, Jim A. JOH AF	424-7206
Matteo, Shelva J. AAL-67	271-5190	Miller, John Milton ZAN-AF	333-6565
Matthews, Michael R. CDV-AF	424-3252	Miller, Leverett N. AAL-52E	243-1150
Mattie, Sandra L. FAI FSS	452-5388	Miller, Morris D. MRI-AF	243-4103
Maurer, August W. ANC-AF	243-2348	Miller, Richard R. ADQ-AF	487-5814
Maxwell, George F. Jr. ZAN ARTCC	333-6565	Miller, William H. AAL-463	271-5787
May, Jane S. AAL-17	271-5372	Millett, Chester D. UNK-AF	624-3121
Mayo, Elinor M. AAL-24A	271-5236	Mills, George M. JNU FSS	789-7351
Mayo, Forrest L. ANC TRACON	243-4575	Milne, John M. AAL-451	271-5215
Maywood, Jack J. FAI AF	456-4600	Milstead, Lonnie L. AAL-422A	277-0589
McCotter, Harriet R. FAI AFI	456-4525	Minix, Larry OME FSS	443-2502
McCullough, Edgar R. JNU FSS	789-7351	Minnich, Glenn A. FICO	243-2394
McCafferty, Sandra Ann OTZ FSS	442-3755	Minsch, Patrick W. KTN-FSS	225-3531
McClellan, Donald B. ANC-AFI	277-0318	Mitchell, Robert D. BRW-AF	852-4566
McCotter, Douglas G. FAI FSS	452-5388	Mitchell, Warren E. ZAN-AF	333-6565
McCoy, Lawrence R. AMB-5	243-1121	Miyamoto, Clifford M. ZAN ARTCC	333-6565
McCumiskey, William J., Jr. ANC TRACON	243-4575	Mobley, Merna M. ANC-AF	243-2348
McCumskey, John P. AAL-5	271-5295	Moilanen, Daniel A. ANC FSS/IFSS	263-6528
McCurtain, Bruce A. AAL-463	271-5807	Moll, William D. ZAN ARTCC	333-6565
McDonald, George N. ANC TRACON	243-4575	Mollers, Don A. AAL-451	243-3900
McDonald, Lewis J. AAL-54A	243-1553	Momblow, William D. ANC TRACON	243-4575
McDonald, Roger Dean KTN-FSS	225-3531	Monfreda, Orlando J. AMB-4	243-1121
McElroy, Ellis R. AAL-610	271-5446	Montell, Frederick H. FAI AFI	456-4525
McEwen, Duane H. SIT-AF	966-2471	Moody, Charles E., Jr. AAL-17	271-5372
McEwen, Ronald E. ZAN ARTCC	333-6565	Moody, Ralph W. ZAN ARTCC	333-6565
McGhee, John L. JNU-AFO	789-7370	Moon, Joyce A. AAL-14	271-5754
McGuire, Clayton E. FAI TRACON	456-8452	Moon, Arnold R., Sr. AAL-463P1	243-3900
McGuire, Fred L. FAI TRACON	456-8452	Moore, Calvin L. ZAN-AF	333-6565
McIntyre, John M. HOM-AF	235-8550	Moore, Frank A. FSDO-61	452-1276
McKee, Ruth L. AMB-1	243-1121	Moore, Ivy P. AAL-64	271-5169
McKee, William H. AAL-430C	271-5345	Moore, Jack E. AAL-6	271-5936
McKenzie, Gus E., Jr. AAL-463	271-5789	Moore, Kenneth R. AAL-620	271-5451
McLeod, Kaye B. ANC FSS/IFSS	263-6528	Moore, Marion ANC-AFI	243-1525
McMillen, Melissa Anne ANC-AF	243-2348	Moore, Rebecca BTT FSS	692-5533
McMolin, Robert A. MPY-AF	452-1411	Moore, Robert B. FIDO	243-1987
McMorrow, Andrew F. FAI FSS	452-5388	Moore, Robert L. ANC FSS/IFSS	263-6528
McMullen, Kelly A. FAI TRACON	456-8452	More, Dorothy L. FAI AF	456-4600
McNatt, John A. JNU-AF	789-2193	Morgan, George H. ACDO-31	243-1902
McNeil, William A. AMB-5	243-1121	Morgan, James W. AAL-463P1	243-3900
McNerney, James M. PSG-AF	772-3788	Morgan, Wilse G. AAL-431	271-5325
McWethy, Gail L. ENA FSS	283-7215	Morgensen, Jeffrey P. ANC TRACON	243-4575
Medisky, David R. ZAN ARTCC	333-6565	Morris, Eugene G., Jr. AAL-250	271-5520
Meeks, Donald R. ZAN ARTCC	333-6565	Morris, Kendall R. BTT FSS	692-5533
Meeks, Dwight D. ANC-AFI	243-1525	Morris, Lawrence A. FAI TRACON	456-8452
Meisner, Thomas C. VDZ C/ST	835-4602	Morris, Rex T. AAL-720B	248-2408
Melius, Byron H. AAL-550	271-5464	Morrison, Robert J. AAL-431	271-5321
Mello, Joseph P. AAL-52E	243-0716	Morrow, Dale P. ANC FSS/IFSS	263-6528
Mellott, Milton M. AAL-452	243-2633	Morrow, Margie E. ZAN ARTCC	333-6565
Mendenhall, Hannah R. OTZ-AF	442-3171	Morse, James K., Jr. AAL-463-P1	243-1984
Mendenhall, William L. ZAN ARTCC	333-6565	Moulton, Tony Derial FAI FSS	452-5388
Mendez, Thomas A. AAL-54A	243-1553	Mower, Rose I. AAL-54	271-5397
Messick, Floyd T. ANC-AFI	243-1525	Mowery, Robert O. ANC FSS/IFSS	263-6528
Mezaros, John F. FAI AFI	456-4525	Muhs, Charles W. AAL-530	271-5895
Metzger, Delores J. AAL-22	271-5230	Mundt, Ernest E. ZAN-AF	333-6565
Meyer, Barry E. CDV FSS	424-7644	Muolo, George C. ENA-AF	283-7245
Meyer, Edmund A. FAI FSS	452-5388	Murat, Steven P. BET-AF	543-2235
Meyers, Cynthia R. FAI FSS	452-5388	Murphy, Mark T. ZAN ARTCC	333-6565
Michaels, John E. GADO-01	276-4708	Murray, John D. AKN TWR	246-3311

Musser, John W., Jr. BTT FSS 692-5533

Oxendine, Jesse K. ZAN ARTCC 333-6565

Oyster, Russell L. AAL-620 271-5455

N

Nakamura, Henry H. AAL-463 271-5796
 Nakea, Lawrence ZAN ARTCC 333-6565
 Nation, Parker J. FSDO-61 452-1276
 Naylor, Dennis L. MPY-AF 452-1411
 Neal, Jerome J. MRI-AF 263-6535
 Near, Gary L. VDZ C/ST 835-4602
 Nelmes, William G. FSDO-61 452-1276
 Nelson, Donald C. FSDO-61 452-1276
 Nelson, James M. ZAN-AF 333-6565
 Nelson, James R. AAL-463P1 243-3900
 Nelson, Jodi K. FAI AF 456-4600
 Nelson, Larry G. AAL-210 271-5932
 Nelson, Robert L. JNU TWR 789-7359
 Nelson, Sherrie L. AAL-52A 271-3573
 Nelson, William E. OME FSS 443-2502
 Neros, Donald AKN FSS 246-3454
 Newman, William M. FAI AF 456-4600
 Newton, Hildegard S. AAL-510 271-5885
 Nichols, Dean R. ANC FSS/IFSS 263-6528
 Nicholson, John G. FIDO 243-1987
 Nickles, Ruth Ann AAL-500 271-5885
 Niemann, Charles W. ZAN ARTCC 333-6565
 Noblett, William L. MRI-AF 263-6535
 Nodine, Harvey ORT-AF 778-6444
 Noe, Albert E. MPY-AF 452-1411
 Norsworthy, John D. MRI TWR 277-0211
 Norsworthy, Patsy R. AAL-421 271-5362
 North, Lowell F. FAI FSS 452-5388
 Novosad, Christine M. AAL-421 271-5360
 Nowland, Alvin D. ORT FSS 778-6611
 Nunley, Fred A. AAL-54E 271-5396

O

O'Neill, Thomas M. AAL-500 271-5885
 Obermiller, Leo E. AAL-450A 271-5196
 O'Connor, Lawrence OME FSS 443-2502
 O'Donnell, Michael M. SIT FSS 966-2929
 Odsather, Kenneth L. AAL-452 271-5213
 Oliver, James L. JNU-AFO 789-7370
 Oliver, James L., Sr. AAL-58 **5862** 271-5878
 Oliver, Lowell A. FAI AF 456-4600
 Oliver, Maggie E. MRI-AF 263-6535
 Oliver, Robert W. AAL-700 271-5557
 Olsen, Louis L. AAL-461 271-5786
 Olson, Robert D. AAL-720 271-5562
 O'Malia, Thomas H., Jr. AAL-6 271-5936
 Omnik, Robert A. OTZ AF 442-3171
 Ondra, Martin S. MRI-TWR 277-0211
 Onstott, Edward L. MCG FSS 524-3935
 Ordway, Harold L. AAL-463E1 243-2642
 Osborne, Cecil C. AAL-452 243-2633
 Ossenkop, Cleo L. AAL-24A 271-5240
 Otte, Fred H. TAL FSS 366-7288
 Otto, Donald M. HOM FSS 235-8588
 Ouimet, Greg J. AAL-54C 271-5393

P

Paaianen, Wesley AAL-432 271-5308
 Pace, Bobby E. FAI AFI 456-4525
 Pagano, Frank AAL-9 271-5292
 Painter, Rebecca G. ZAN ARTCC 333-6565
 Palk, Dexter ACDO-31 243-1902
 Palmer, David R. ZAN ARTCC 333-6565
 Palmer, Steven R. ZAN ARTCC 333-6565
 Pannone, Michael L. ANC TRACON 243-4575
 Papasodora, Vito V. AAL-54C 271-5393
 Parker, Ellen L. BET AF 543-2235
 Parker, Lawrence W. KTN-FSS 225-3531
 Parr, Michael C. FAI AFI 456-4525
 Parsons, Samuel AAL-620 271-5456
 Parvin, Loretta E. AAL-430 271-5351
 Patchett, Allan J., Jr. ZAN ARTCC 333-6565
 Paterna, Gary J. ANC FSS/IFSS 263-6528
 Paterson, Gerald C. GADO-01 276-4016
 Patnoe, Elsie L. AAL-52B 271-5389
 Pattison, Floyd AAL-690 271-5459
 Paxton, Robert J. ZAN ARTCC 333-6565
 Payne, Marilyn S. ZAN ARTCC 333-6565
 Percy, Gary L. ZAN ARTCC 333-6565
 Pearson, Corella D. GADO-01 276-3939
 Peavyhouse, Kenneth E. AAL-4 271-5285
 Pebsworth, Roy G. AMB-4 243-1121
 Pedersen, Martin H. OTZ FSS 442-3755
 Pedigo, Bobby L. BTT-AF 692-5131
 Peek, Kenneth R. JNU TWR 789-7259
 Pelfrey, Marvin C. AAL-431 271-5324
 Penland, William M., Jr. BET FSS 543-2230
 Penn, Clifford N., Jr. ZAN ARTCC 333-6565
 Penrose, James Michael FAI AFI 456-4525
 Pepin, Edward M. ANC-AFI 243-1525
 Perham, James S. AAL-610 271-5448
 Perkins, Harold A. ANC-AFI 243-1525
 Pershall, Viola J. AAL-55C 271-5865
 Petersen, Gary W. ANC FSS/IFSS 263-6528
 Peterson, Charlotte A. ZAN-AF 333-6565
 Peterson, David R. MRI-AF 263-6535
 Peterson, Lee W. AAL-530 271-5898
 Peterson, Linda L. AAL-300 271-5431
 Petranovich, John AAL-58 271-5873
 Petrishak, Anna R. AAL-54C 271-5394
 Petty, Larry J. AAL-720A 243-4338
 Pettyjohn, Helen M. AAL-4 271-5288
 Pfauth, Mary C. MRI-AF 263-6535
 Pfeifer, John W. ADQ TWR 487-4339
 Phagan, Robert J. OTZ-AF 442-3171
 Phillips, Gary J. ANC TRACON 243-4575
 Phillips, James E. FAI TRACON 456-8452
 Phillips, John D. GADO-01 276-4708
 Phillips, Marcelle G. AAL-52B 271-5385
 Phipps, Roger N. ILI FSS 571-1240
 Pickett, Roy N. AAL-401 271-5616
 Pierce, Beecher L. MRI-AF 263-6538
 Pike, James M., Jr. ZAN ARTCC 333-6565
 Pinette, Kathleen L. AKN-AF 246-3314

Pippin, Mary J. FAI FSS 452-5388
 Pirkl, Paul S. KTN-FSS 225-3531
 Piscoya, Roy AMB-3 243-1121
 Pitts, Donald R. AAL-500 271-5885
 Plank, Donald E. MRI TWR 277-0211
 Pollett, Richard D. FAI AFI 456-4525
 Pollitt, Carol A. ZAN ARTCC 333-6565
 Pollock, Wesley R. AAL-461 271-5839
 Polson, Duane R. MRI-AF 263-6535
 Poor, Philip G. AAL-430D 271-5348
 Pope, John C. AAL-463E1 243-2642
 Popp, Charles F. GKN-AF 822-5863
 Porter, Freddy L. AAL-223 271-5517
 Porter, Stanley Burton ENA FSS 283-7215
 Potzger, Richard H. ZAN ARTCC 333-6565
 Powell, Ole A. ZAN-AF 333-6565
 Powers, Richard D. GADO-01 276-4708
 Powers, Wilson H. FAI AFI 456-4525
 Prescott, Elton H. MRI-AF 263-6538
 Presley, David N. ANC-AF 243-2348
 Price, James V. AMB-4 243-1121
 Price, Robert J. JOH AF 424-7206
 Proue, Amy L. AAL-50 271-5427
 Proue, Paul E. ZAN ARTCC 333-6565
 Pruett, Lyndol L. ANC-AF 243-2348
 Putnam, John B. ZAN-AF 333-6565

Q

Queen, William W. FIDO 243-1987
 Quince, Michael A. ZAN ARTCC 333-6565

R

Rahmn, Timothy R. HOM FSS 235-8588
 Rahrig, Ronald L. ZAN-AF 333-6565
 Raines, Buck FAI AF 456-4600
 Raker, Paul E. GADO-01 276-4016
 Ramhorst, Neil C. VDZ AF 835-4602
 Ramos, Linda L. ENA FSS 283-7215
 Ranson, Merle J. AAL-52E 243-1150
 Ranspot, John W. AAL-460 271-5840
 Rapson, George D. ANC TRACON 243-4575
 Rasmussen, Mabel C. AAL-24B 271-5248
 Reardon, Denise Ann FAI FSS 452-5388
 Reed, Edward J. ANC TRACON 243-4575
 Reed, Ronald D. ZAN ARTCC 333-6565
 Reed, Timothy A. BET FSS 543-2230
 Rees, Terrell W. AAL-431 271-5337
 Reese, Joseph N. AAL-30 271-5276
 Reeves, Raymond C. AAL-17 271-5378
 Reindl, Daryl L. AAL-451 271-5207
 Remsen, William F. AAL-55 271-5401
 Renfroe, Ann E. FAI AF 456-4600
 Renner, Judy C. ZAN ARTCC 333-6565
 Rennie, John D. BRW-AF 852-4566
 Repasky, John J. ANC-AFI 243-1525
 Repoff, Gregory J. AKN TWR 246-3311
 Reynolds, George AKN-AF 246-3314

Reynolds, Jerry N. AMB-5 243-1121
 Reynolds, William C. AAL-250 271-5906
 Rhodes, Warner J. AAL-720 271-5561
 Rhodes, Anthony M. ANC TRACON 243-4575
 Rich, Samuel J. ZAN ARTCC 333-6565
 Richards, Paul M. AAL-14 271-5747
 Richardson, Harold B. CDV FSS 424-7644
 Richel, Raymond P. ANC FSS/IFSS 263-6528
 Riddle, Beverly FAI AF 456-4600
 Riddle, Doyle B. FAI FSS 452-5388
 Riedel, Robert A. AAL-510 271-5883
 Riedel, Robert Alan FAI TRACON 452-3337
 Rigg, James P., Jr. AAL-300 271-5431
 Riley, Carla J. AAL-14 271-5747
 Riley, Michael J. FAI AF 456-4600
 Rios, Carlos G. FAI AF 456-4600
 Risdal, Thomas H. FAI FSS 452-5388
 Rivera, Juan J. AMB-5 243-1121
 Roachell, Frank J. AAL-463P1 243-1976
 Roath, Alfred DLG AF 842-5919
 Roberson, Clifford E. AAL-463 271-5801
 Roberts, Neil C. ZAN ARTCC 333-6565
 Roberts, Jacqueline K. AAL-14 271-5747
 Robinson, Lurenzia AMB-4 243-1121
 Robitaille, Richard E. ZAN ARTCC 333-6565
 Rodes, Gus N. ENA-AF 283-7245
 Rodger, Lawrence M. AAL-54E 271-5395
 Rodger, Shirley F. GADO-01 276-3939
 Rodriguez, Charlie FAI AF 456-4600
 Rogers, Betty M. GADO-01 276-4708
 Rogers, Dee M. FSDO-62 789-0231
 Rogers, Gloria M. AAL-61 271-5302
 Rogers, Harvey K. JNU-AFO 789-7370
 Rogers, Paul A. AAL-453 271-5221
 Rogers, Randy K. FWL FSS 211-
 Rohwer, Paul W. AMB-2 243-1121
 Romer, Jesse E. BET-AF 543-2235
 Ronaldson, David ANC TRACON 243-4575
 Ross, Carter V. ZAN-AF 333-6565
 Roush, Cleo Joe AAL-54C 271-5393
 Rowell, Michael J. AAL-452 243-2633
 Rubin, Merry F. AAL-22A 271-5253
 Ruks, Stephen C. CDV-AF 424-3252
 Runestad, Ora G. AAL-22A 271-5260
 Rush, Barbara ZAN ARTCC 333-6565
 Ruth, John I. HOM FSS 235-8586
 Rutland, Laura FAI FSS 452-5388
 Ryan, Jane AAL-421 271-5364
 Ryan, Jean A. AAL-500 271-5885
 Ryan, Timothy G. OME FSS 443-2502

S

Safko, Teresa M. AAL-205 271-5909
 Salzman, Robert A. OME-AF 443-2226
 Sam, Frederick ANC-AF 243-2348
 Sam, Henry Jr. KTN AF 225-5923
 Sam, Roy F. ORT-AF 778-6444
 Sammons, Robert K. FAI TRACON 456-8452
 Samples, V. Jeanette AAL-22B 271-5265
 Sanders, Patricia A. AAL-300 271-5431
 Santiago, Robert AMB-5 243-1121

Santos, Bernard T. AAL-7	271-5269	Starrbresette, George B. ADQ-AF	487-5814
Saunders, Charles E. ADQ TWR	487-4339	Staudinger, Melvin YAK FSS	784-3314
Sauvageau, Arne C. MRI-AF	263-6535	Stearns, Mary F. AAL-558	271-5846
Saxton, Hartley B. AAL-463P1	243-3900	Steckel, Dale R. ANC-AF	243-2348
Sayers, Dennise W. AAL-61	271-5301	Steen, Karen ZAN-AF	333-6565
Schefers, Oswald J. AAL-463P1	243-1984	Steiner, Clara B. ANC FSS/IFSS	263-6528
Schene, Alvin B. FSDO-61	452-1276	Stephens, Erland D. ZAN ATRCC	333-6565
Schiller, Jerome J. GADO-01	276-4708	Sterling, Clyde N. ENA TWR	283-7245
Schmidt, Harold J. ANC TRACON	243-4575	Stevens, Delmar L. AAL-452	243-2633
Schmidt, Margaret Ivy ANC-AF	243-2348	Stevenson, Ed S. FIDO	243-1987
Schmidtman, R. William AAL-15	271-5395	Stewart, Paul E. AAL-500	271-5885
Schneider, Erie R. FIDO	243-1260	Stiles, Carl B. OTZ FSS	442-3755
Schneider, Leslie E. ENA-AF	283-7245	Still, Elizabeth D. ANC FSS/IFSS	263-6528
Schnell, Ann FAI FSS	452-5388	Still, William A. ZAN ARTCC	333-6565
Schofield, William E. AAL-6	271-5936	Stills, Elbert T. ZAN-AF	333-6565
Schommer, John J. ANC TRACON	243-4575	Stinson, Robert W. AAL-510	271-5881
Schommer, Ruth A. GADO-01	276-4016	Stites, Steven D. ZAN ARTCC	333-6565
Schroeder, Juanita J. AAL-67	271-5190	Stith, Ray ANC AFI	243-1525
Schultz, Donald E. OTZ-AF	442-3171	Simpson, David C. AAL-501	271-5464
Schultz, Lawrance T. AAL-610	271-5443	Singleton, Julius E. AAL-52E	243-1971
Schultz, Neil E. CDV FSS	424-7644	Sisson, Glen L. ZAN-AF	333-6565
Schwaab, William J. ADQ TWR	487-4339	Sisson, Jeffrey A. AMB-4	243-1121
Schwantes, Karl F. AAL-463P1	243-3900	Skinner, Joseph M. ZAN ARTCC	333-6565
Scott, Allan L. AMB-4	243-1121	Slabaugh, Betty J. AAL-22A	271-5232
Scott, Charles F. AAL-54	271-5397	Slayton, Ray JNU-AF	789-2193
Scott, Douglas A. MRI-AF	263-6535	Sloan, Albert B. ZAN ARTCC	333-6565
Scott, Earl R. ANC FSS/IFSS	263-6528	Sloan, Wanda A. AAL-4	271-5282
Scott, George C. ZAN ARTCC	333-6565	Smart, Richard E. OTZ FSS	442-3755
Scrivner, John P. SCC-AF	659-2603	Smith, Alvin H. YAK-AF	784-3312
Scukanec, John ANC FSS/IFSS	263-6528	Smith, Donald A. AAL-463	271-5798
Searcy, Michael E. ZAN ARTCC	333-6565	Smith, Gregg L. ZAN ARTCC	333-6565
Seeley, Floyd J. AAL-720	271-5560	Smith, Howard L. AAL-610	271-5444
Seetot, Roger O. FAI AF	456-4600	Smith, James A. ANC-AFI	243-1525
Semingson, Michael H. FAI AFI	456-4525	Smith, John W. AAL-452	271-5212
Sessions, Dalton F. AAL-510	271-5884	Smith, Kenneth J. ZAN-AF	333-6565
Seversen, George ZAN-AF	333-6565	Smith, Kermit M. FAI TRACON	456-8452
Severson, Marshall G. ZAN ARTCC	333-6565	Smith, Mary V. AAL-54D	271-5391
Shain, Murray M. FSDO-61	452-1276	Smith, Peggy L. AAL-421	271-5363
Sharpe, Jon Roger ZAN ARTCC	333-6565	Smith, Perry D. ZAN ARTCC	333-6565
Sharrett, Dorothy T. ACDO-31	243-1902	Smith, Peter S. FAI FSS	452-5388
Shavings, Marian L. AAL-530A	271-5892	Smith, Wilbur M. ZAN ARTCC	333-6565
Shaw, John D. BET-AF	543-2235	Snell, Larry D. AAL-58	271-5868
Shaw, Karla W. AAL-55A	271-5859	Snodgrass, Frank F. BTT-AF	692-5131
Shearer, James H. ANC TRACON	243-4575	Soper, Mary J. AAL-422	271-5833
Sheneman, Earl B. ANC FSS/IFSS	263-6528	Sorensen, Gerald ZAN ARTCC	333-6565
Shepherd, Robert E. FSDO-61	452-1276	Sorensen, Richard W. CDV FSS	424-7644
Shield, Ted Lee OTZ-AF	442-3171	Soule, Larry J. ANC TRACON	243-4575
Shillinger, John R. ZAN ARTCC	333-6565	South, Melvin L. MRI TWR	277-0211
Shirk, Carrol P. ZAN ARTCC	333-6565	Spannagel, Ann FAI AFI	456-4525
Shockley, James M. ZAN-AF	333-6565	Spargur, Dwight W. ANC TRACON	243-4575
Shrum, Walter E. AKN-AF	246-3417	Specht, Richard J. AAL-463E	271-5802
Shultz, Howard S. AAL-52E	243-1971	Spencer, Franklin A. FAI TRACON	456-8452
Shupp, Jacqueline M. AKN FSS	246-3454	St. Pierre, Bruce W. ADQ TWR	487-4339
Shute, Lois H. AAL-400	271-5616	Stafford, Michael E. FAI TRACON	456-8452
Siegienski, Anthony D. ANC-AFI	243-1525	Stallcop, Lester C. AAL-451	243-3900
Siegrist, Terrence A. ANC TRACON	243-4575	Stanberry, Robert Alan AAL-500	271-5885
Sierer, Emerson Leo, Jr. FAI AF	456-4600	Stanfield, Shari F. ENA FSS	283-7215
Simantel, Dennis R. ZAN-AF	333-6565	Stanford, Alfred L. ENA TWR	283-7245
Simianer, Carl W. AKN-AF	246-3310	Stanford, Harold ORT-AF	778-6444
Simmons, Allen Lee ZAN ARTCC	333-6565	Stanford, Steven A. AMB-5	243-1121
Simmons, Michael E. MCG FSS	524-3935	Stanton, James FAI TRACON	456-8452
Simon, Lisa R. AAL-61	271-5301	Staples, Eliot S. AAL-463P1	243-3900
Simpkins, James J. AAL-463E1	243-2642	Stark, Sherry A. AAL-61	271-5301

Stockwell, Douglas R. ORT AF 778-6444
 Stone, Nelson ANC TRACON 243-4575
 Stone, Sidney V. GADO-01 276-3939
 Strassel, Richard C. KTN-FSS 225-3531
 Stratman, Leoroy J. ZAN ARTCC 333-6565
 Strickland, Robie B. AAL-600 271-5438
 Strickland, Patricia M. AAL-9 271-5289
 Strong, Robert M., Jr. JNU-AF 789-2193
 Stull, Harold C., Jr. ZAN ARTCC 333-6565
 Sturgill, Jerry L. CDB-AF 532-2443
 Suarwez, Alvaro F. ANC-AF 243-2348
 Suboski, Victoria K. AAL-67 271-5189
 Suckow, Conrad KTN-FSS 225-3531
 Suko, Melvin L. ENA-AF 283-7245
 Sutter, Homer A. SIT FSS 966-2929
 Swanson, Jerry R. AMB-4 243-1121
 Swanson, John MRI-AF 263-6535
 Sweeney, Patricia A. AAL-14 271-5758
 Sycks, Vernon ANC-AF 243-2348
 Syverson, Danny G. ANC FSS/IFSS 263-6528
 Szmyd, Gary W. BTT AF 692-5131

T

Tamas, Judith A. AAL-17 271-5375
 Tarr, Michael A. YAK FSS 784-3314
 Tarr, Robert L. ZAN ARTCC 333-6565
 Taussig, Sharon J. BTT FSS 692-5533
 Taylor, Cecil W. PAQ-AF 745-3269
 Taylor, Charlene Y. AAL-710 271-5565
 Taylor, Defford B. FIDO 243-1987
 Taylor, Dorothy J. AAL-14 271-5759
 Taylor, Phyllis P. AAL-52D 271-3568
 Taylor, Thomas M. ACDO-31 243-1902
 Teague, Jacqueline J. MCG FSS 524-3935
 Teders, James W. ZAN ARTCC 333-6565
 Teffeteller, Jack V. ANC FSS/IFSS 263-6528
 Teffeteller, Willie B. AAL-14 271-5755
 Terry, Gary W. AKN-AF 246-3450
 Teutsch, Velma AAL-22B 271-5262
 Thalaker, Neil E. ANC-AFI 243-1525
 Tharp, Wallace L. FAI TRACON 456-8452
 Theros, James D. FAI TRACON 456-8452
 Thibault, Pamela J. AAL-250 271-5906
 Thiele, Tamara L. ZAN ARTCC 333-6565
 Thomas, Debra S. ANC-AFI 243-1525
 Thomas, Delbert B. AAL-450M 271-5202
 Thomas, Felix N., Jr. FSDO-61 452-1276
 Thomas, Jo Ann AAL-6 271-5936
 Thomas, Robert D. AAL-6 271-5936
 Thompson, Bill E. ZAN ARTCC 333-6565
 Thompson, Jack W. BTT FSS 692-5533
 Thompson, Robert M. FAI AF 456-4600
 Thompson, Thomas E. FAI AF 456-4600
 Thompson, Tommy A. ZAN ARTCC 333-6565
 Thompson, Warren R. OTZ FSS 442-3755
 Thorson, Thomas S., Sr. DLG-AF 842-5919
 Thunstrom, Lloyd M. ANC FSS/IFSS 263-6528
 Thurman, Barbara D. AAL-700 271-5557
 Tillman, George E. ZAN-AF 333-6565
 Tinney, Nancy F. ZAN-AF 333-6565
 Tinney, William H. AMB-3 243-1121

Titus, James H. FSI TRACON 456-8452
 Tjaden, Steven M. ANC TRACON 243-4575
 Tolbert, Georgia L. AKN FSS 246-3454
 Tomany, Richard J. FAI FSS 452-5388
 Tomlinson, Jackie L. ANC FSS/IFSS 263-6528
 Toppa, William D. BET FSS 543-2230
 Trent, Billy L. YAK-AF 784-3312
 Troutman, Robert E. ANC TRACON 243-4575
 Traux, Albert B. FIDO 243-1987
 Tryon, Steven F. OME FSS 443-2502
 Tucker, Harriet AAL-9 271-5289
 Tucker, Joyce L. AAL-463E1 243-2642
 Tudor, James C. AKN TWR 246-3311
 Turbe, Louis T., Jr. ZAN ARTCC 333-6565
 Turnbull, Richard L. AAL-432 271-5332
 Turner, Annabelle H. AAL-690 271-5462
 Turner, June E. AKN FSS 246-3454
 Turner, Robert D. ANC FSS/IFSS 263-6528
 Turner, Steven D. ZAN ARTCC 333-6565
 Tuthill, Robert D. OTZ-AF 442-3171
 Tutko, Paul R. AAL-24B 271-5245
 Tvrdy, Jimmie J. AAL-461A 243-1121
 Twiggs, John David AAL-452 271-5214
 Twiggs, Warren O. ANC FSS/IFSS 263-6528

U

Udelhoven, Pamela AAL-500 271-5885
 Ulbricht, Robert E. AAL-210 271-5933
 Underwood, Ralph W. AMB-5 243-1121
 Upicksoun, Allen L. OTZ-AF 442-3171

V

Van Horn, Lyle H. JNU FSS 789-7351
 Van Horne, Alan K. ENA-AF 283-7245
 Vanborg, Gilbert G. MCG-AF 524-3155
 Vance, Dean M. OME-AF 443-2226
 Vance, Wayne Lee ZAN ARTCC 333-6565
 Vandegrift, Larry A. ANC-AFI 243-1525
 Venes, Elias BET-AF 543-2235
 Viceroy, Penny L. AAL-54 271-5397
 Vlasoff, Raymond S. AKN-AF 246-3314
 Voltz, Naomi C. AAL-421 271-5365

W

Wadepammer, Leo V. FSDO-61 452-1276
 Wagenius, Sevard E., Jr. SIT AF 966-2471
 Wainwright, Roy O. ANC TRACON 243-4575
 Walcutt, James D. ANC FSS/IFSS 263-6528
 Walden, Benjamin J. FAI AFI 456-4525
 Walker, Carolyn J. AAL-55C 271-5864
 Walker, Margaret W. AAL-50 271-5427
 Wall, Joseph M. ZAN ARTCC 333-6565
 Wallace, Johnnie L. FSDO-61 452-1276
 Wallace, Mary Lou AAL-54A 243-1553
 Wallace, Robert L. ANC TRACON 243-4575
 Wallace, Sandra R. AAL-450M 271-5201
 Wallona, Phillip T. PAQ-AF 745-3269

Walters, Blanche O. OME-AF	443-2226
Walton, Jim C. AAL-13	271-5476
Wamsganz, Willard H. AAL-451	243-3900
Ward, Calvin L. GKN FSS	822-3236
Wardleigh, Thomas H. FIDO	243-1987
Warren, Roger AAL-451	271-5209
Washburn, Dolores L. AAL-55B	271-5867
Wassmann, Wendell J. OME FSS	443-2502
Watson, Charles W., III ORT FSS	778-6611
Watson, Shirley R. FAI TRACON	452-3337
Watt, Arthur H. CDB-AF	532-2443
Watterson, J. B. AAL-563P1	243-3900
Watts, Evelyn I. CDB FSS	532-2454
Watts, Patricia T. JNU TWR	789-7259
Way, Ronald M. MYP-AF	452-1411
Weatherby, Thor Jr. FAI AF	456-4600
Weathers, James E. AAL-52E	243-1150
Weaver, Leonard ANC FSS/IFSS	263-6528
Weber, Clarence G. AAL-452	243-2633
Weeks, Norman R. OME FS	443-2502
Wegner, Dennis E. MRI TWR	277-0211
Wegrzyn, Paul A. SIT FSS	966-2929
Wehe, Eugene J. VDZ C/ST	835-4602
Wier, Thomas P. ZAN ARTCC	333-6565
Welch, Claude E. ANC FSS/IFSS	263-6528
Welcyng, Robert E. AAL-431	271-5316
Wells, James A. FAI FSS	452-5388
Wenger, Clyde C. FAI TRACON	456-8452
Wertz, Jeffery A. ANC TRACON	243-4575
Wery, Julius K. ZAN ARTCC	333-6565
West, David E. AAL-463	271-5797
Westcott, Paul G. KTN AF	225-5923
Westura, William A. ZAN ARTCC	333-6565
Wetzel, Roderick L. KTN-FSS	225-3531
Weyand, Dennis AAL-452	243-2633
Whalley, Bruce G. AAL-452	243-2633
Wheeler, Floyd H. OME-AF	443-2226
Wheeler, Henry V., III FAI AFI	456-4525
Wheeler, Wanda A. AAL-24B	271-5246
Whetzel, Judith A. AAL-720	271-3608
White, Fred T. SCC-AF	659-2603
White, Rachel M. AAL-24B	271-5250
Whitney, Linda E. ANC-AF	243-2348
Widemayer, Noel A., Jr. AKN FSS	246-3454
Wieber, Jerry C. ANC-AF	235-8550
Wieskamp, Cheryl A. ANC TRACON	243-4575
Wilcox, Gerald K. AKN-AF	246-3450
Wiles, David O. ZAN-AF	333-6565
Wilkins, Marylin J. ANC FSS/IFSS	263-6528
Williams, Abraham L. AKN-AF	246-3450
Williams, Charlie OME-AF	443-2226
Williams, David H. TAL FSS	366-7288
Williams, Elmer I. AAL-4	271-5286
Williams, Gracia L. AAL-58	271-5877
Williams, Lawrence H. FSDO-62	789-0231
Williams, Paul J. AAL-461	271-5835
Williamson, Cary N. FAI AFI	456-4525
Williford, John W. CDB-AF	532-2443
Willis, Jeanett AAL-22A	271-5254
Willoughby, Briggs N. ZAN ARTCC	333-6565
Wilson, Carol AAL-205	271-3579
Wilson, Catherine L. HOM FSS	235-8588
Wilson, Clifford O. AAL-451	243-3900

Wilson, Dennis Charles ZAN ARTCC	333-6565
Wilson, Edward T. ENA TWR	283-7245
Wilson, Gloria B. ZAN ARTCC	333-6565
Wilson, Patrick D. ZAN ARTCC	333-6565
Wilson, Robert E. AAL-420	271-5829
Wilson, Robert G. AAL-54A	243-1553
Winter, Steven E. FSDO-62	789-0231
Wirth, Richard A. JNU AFO	789-7370
Witaschek, Larry J. ZAN ARTCC	333-6565
Witcher, Thomas H. AKN-AF	246-3450
Wittfeld, Carl J., Jr. FIDO	243-1260
Wohlrabe, Linda S. AAL-20A	271-5228
Woischke, Robert B. ANC FSS/IFSS	263-6528
Wolf, Mary L. FAI FSS	452-5388
Wolski, Edward S. AAL-461A	243-1121
Woodbury, George B. AAL-10	271-5471
Woolsey, Robert A. ZAN-AF	333-6565
Wright, Dianne FAI AFI	456-4525
Wright, Harold M. AAL-451	271-5208
Wright, Jack B. ACDO-31	243-1902
Wyatt, Diana L. ENA-AF	283-7245
Wylie, Jerry M. AAL-530	271-5903
Wyloge, Steven E. ZAN ARTCC	333-6565

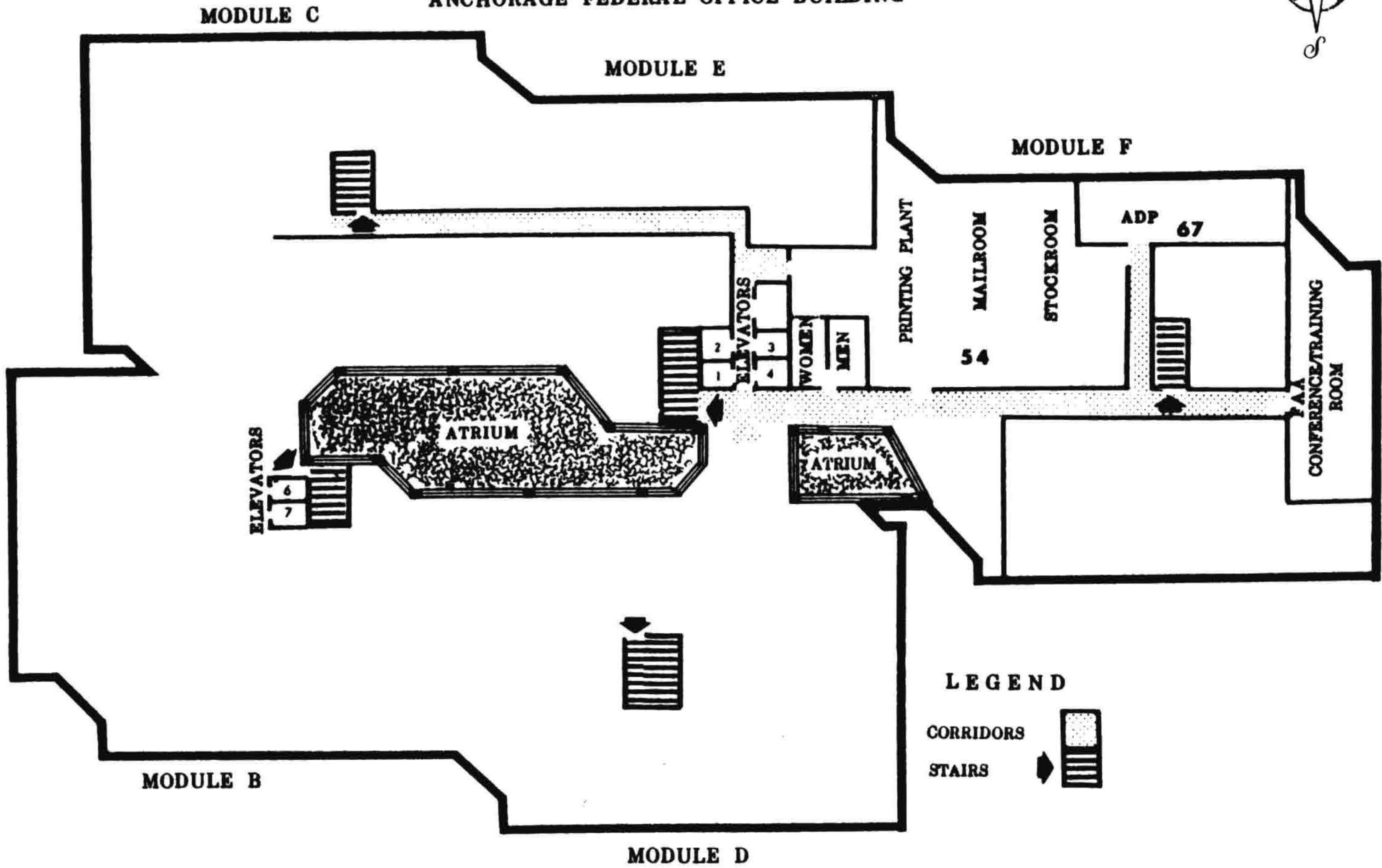
Y

Yakal, James Edwin KTN-FSS	225-3531
Yells, Arthur L, Jr. AAL-250	271-5913
Yerkes, Myles C. AKN FSS	246-3454
Yerkes, Robert W. AAL452	243-2633
Yigdon, Harry K. AAL-463P1	243-3900
Yockey, Patricia FSDO-61	452-1276
Young, Clifford A., III ZAN ARTCC	333-6565
Young, John O. AAL-52E	243-1971
Young, Rexel S. L. AAL-55B	271-5853
Younkins, Hugh C. FSDO-61	452-1276
Yount, Norma J. AAL-461	271-5783

Z

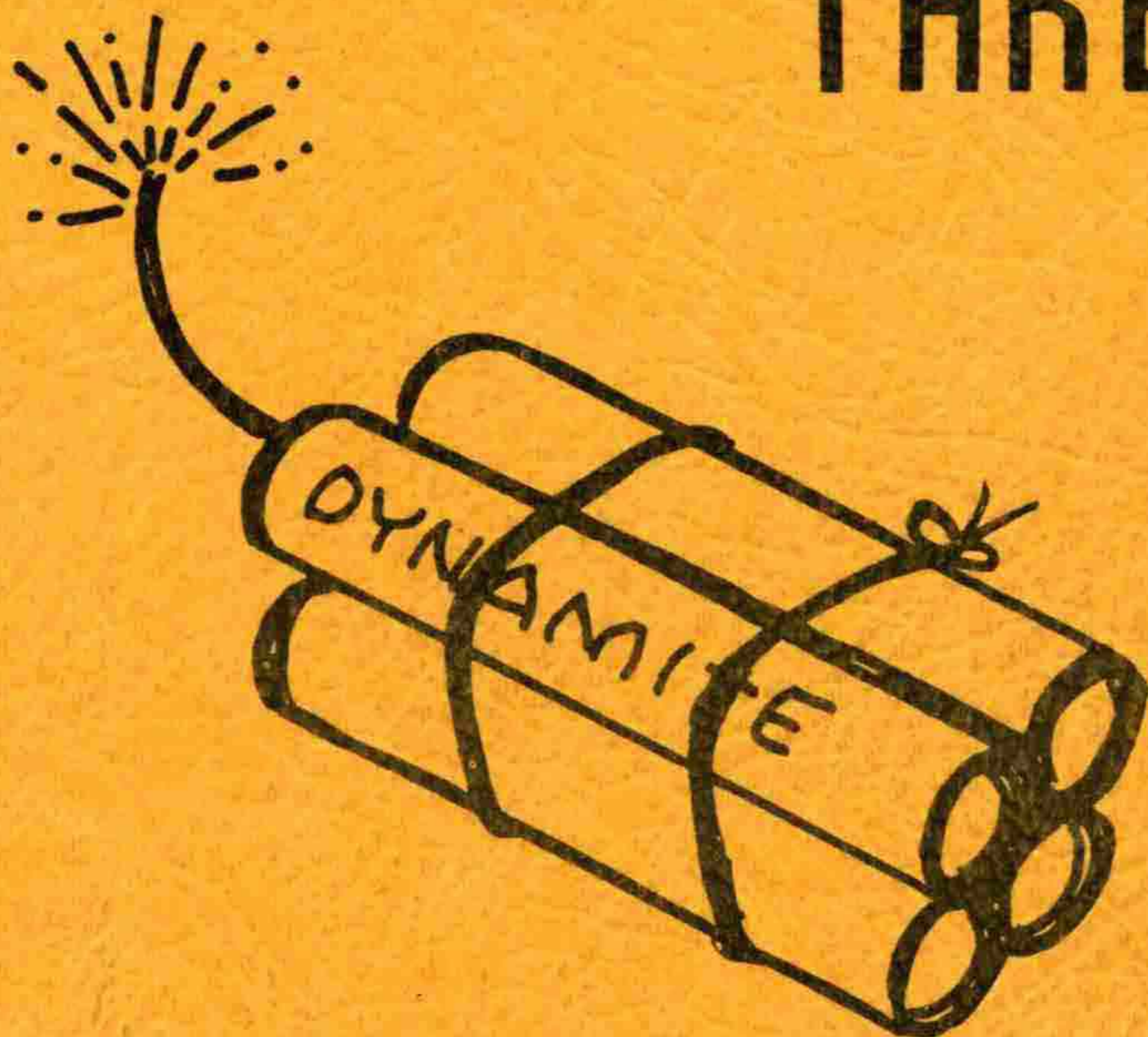
Zarr, Harold L. MCG FSS	524-3935
Zeller, David C. AAL-461	271-5836
Zentner, Elizabeth M. ZAN ARTCC	333-6565
Zilka, Lorraine P. ZAN ARTCC	333-6565
Zitzow, Joyce B. AAL-58	271-5872
Zschiegner, Frank R. ZAN-AF	333-6565
Zuke, Darrel L. FAI AFI	456-4525
Zywna, Robert J. AAL-451	243-3900

SECOND FLOOR
FAA OCCUPANCY
IN THE
ANCHORAGE FEDERAL OFFICE BUILDING



BOMB

THREAT



SHOULD YOU RECEIVE A BOMB THREAT CALL, SIGNAL SOMEONE IN THE OFFICE BY HOLDING THIS PAGE FOR THEM TO SEE. THEY CAN THEN ATTEMPT TO HAVE THE CALL TRACED (IF POSSIBLE) WHILE YOU KEEP THE CALLER TALKING OR THEY CAN LISTEN IN ON THE CONVERSATION AS IT PROVIDES FOR MORE ACCURATE INFORMATION WITH TWO PEOPLE COMPARING NOTES AS TO WHAT THE CALLER SAID.